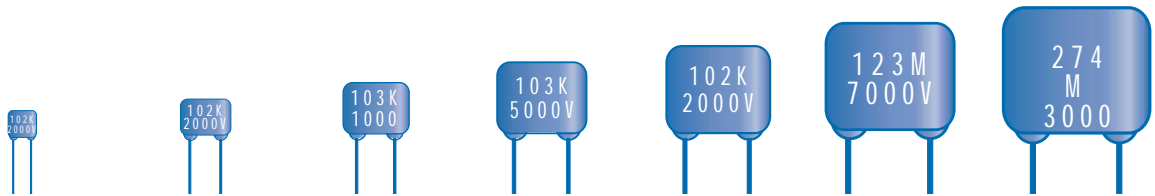
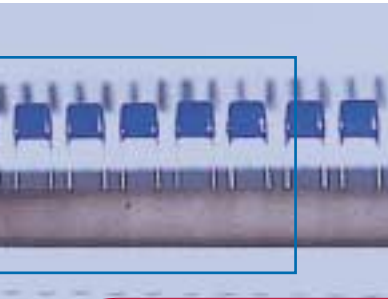




RADIAL LEAD HV CAPACITORS - COMMERCIAL RANGES

COMMERCIAL RANGES

NOVACAP High Voltage Leaded Capacitors are available in COG and X7R characteristics. Conformal coating and lead mounting provide a rugged configuration for optimum performance, with high capacitance efficiency per KV rating. Units are designed for commercial/industrial use to 10 KV, with application in power supply and voltage multiplier circuits. Minimum voltage is 500 Vdc. Higher voltage ratings are available, as well as high reliability versions, with restricted capacitance ranges. Please refer to other NOVACAP literature, or consult the factory.



SIZE	1515	2520	3530	4540	5550	6560	7565
W MAX.	.250 (6.35)	.400 (10.2)	.500 (12.7)	.600 (15.2)	.700 (17.8)	.800 (20.3)	.900 (22.8)
H MAX.	.250 (6.35)	.350 (8.89)	.450 (11.4)	.550 (11.4)	.650 (16.5)	.750 (19.0)	.850 (21.6)
T MAX.	.200 (5.08)	.250 (6.35)	.350 (8.89)	.400 (10.2)	.400 (10.2)	.400 (10.2)	.500 (12.7)
S +/- .030	.170 (4.32)	.280 (7.10)	.380 (9.65)	.480 (12.2)	.580 (14.7)	.680 (17.3)	.780 (19.8)

MAXIMUM CAPACITANCE 3 Digit Code: See How to Order

V
O
L
T
A
G
E

	COG	X7R	COG	X7R	COG	X7R	COG	X7R	COG	X7R	COG	X7R	COG	X7R
500V	682	184	223	564	393	824	563	125	104	185	154	275	224	475
600V	392	104	123	274	273	564	473	824	563	155	104	225	154	335
800V	392	823	103	224	183	334	333	684	563	125	823	185	104	225
1000V	392	563	103	184	153	274	223	564	563	105	823	155	104	185
2000V	222	822	682	333	123	473	183	823	393	154	563	224	683	394
3000V	102	332	392	123	822	223	822	393	273	683	393	104	563	184
4000V	331	152	152	562	392	123	272	183	123	273	183	393	333	823
5000V			561	222	182	562	182	103	472	183	562	273	153	563
6000V					102	332	122	682	332	123	472	183	562	333
7000V					681	222	122	472	222	822	332	123	472	223
8000V					471	152	821	332	182	682	272	822	472	183
9000V					391	102	681	272	152	562	222	682	392	153
10000V								222	122	392	182	562	392	123

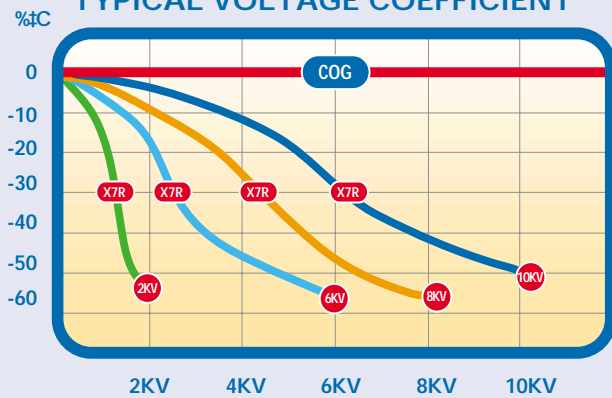
Dimensions in inches; bracketed dimensions in millimeters.



COG DIELECTRIC CHARACTERISTICS

OPERATING TEMPERATURE RANGE:	-55 C to 125 C
TEMPERATURE COEFFICIENT:	0 +/- 30 ppm/ C
DISSIPATION FACTOR:	.001 (0.1%) max @ 25 C
INSULATION RESISTANCE, 25 C	>100G or >1000 F
125 C	>10G or >100 F
DIELECTRIC WITHSTANDING VOLTAGE:	120% VDCW, or 750V*
*WHICHEVER IS GREATER	
AGING RATE:	0% per decade
TEST PARAMETERS:	1KHz, 1.0 +/- 0.2 VRMS, 25 C
	1MHZ for Capacitance <100pF

TYPICAL VOLTAGE COEFFICIENT

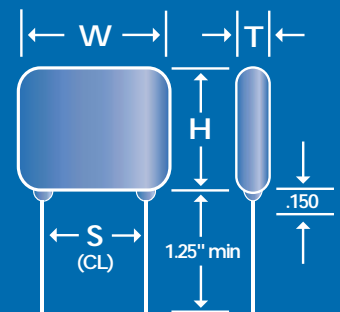


X7R DIELECTRIC CHARACTERISTICS

OPERATING TEMPERATURE RANGE:	-55 C to 125 C
TEMPERATURE COEFFICIENT:	+/-15% ΔC Max.
DISSIPATION FACTOR @ 25 C:	.025 (2.5%) max @ 25 C
INSULATION RESISTANCE, 25 C	>100G or >1000 F
125 C	>10G or >100 F
DIELECTRIC WITHSTANDING VOLTAGE:	120% VDCW, or 750V*
*WHICHEVER IS GREATER	
AGING RATE:	< 2.0% per decade
TEST PARAMETERS:	1KHz, 1.0 +/- 0.2 VRMS, 25 C

HOW TO ORDER

4540	B	103	K	302	LE
SIZE See Chart	DIELECTRIC N = COG B = X7R	CAPACITANCE Value in Picofarads Two significant figures, followed by number of zeros: 103 = 10,000pF	TOLERANCE J = +/- 5 % K = +/- 10 % M = +/- 20 %	VOLTAGE-VDCW Two significant figures, followed by number of zeros: 302 = 3000V	TERMINALS LE = Radial Lead Conformal Coat LO = Radial Lead Uncoated



22AWG (.025 Diam)