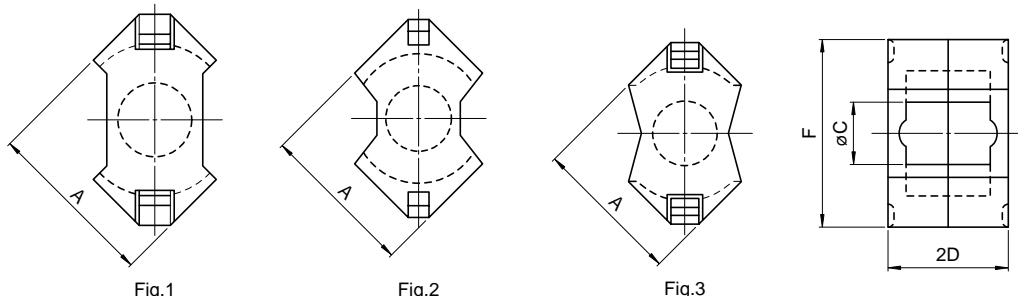


# Ferrite Cores

# RM Series

For Power Supply and Signal Transformer  
RM Cores

## CORE SHAPES AND DIMENSIONS/CHARACTERISTICS



Type	Fig.	Dimensions (mm)				Ae (mm <sup>2</sup> )	le (mm)	Weight (g)
		A	øC	2D	F			
RM4	1	9.63±0.18	3.8±0.1	10.4±0.1	10.8±0.2	14	22.7	1.7
RM5	1	12.05±0.25	4.8±0.1	10.4±0.1	14.3±0.3	23.7	22.4	3
RM6	3	14.4±0.3	6.3±0.1	12.4±0.1	17.6±0.3	37	29	5.1
RM8	2	19.35±0.35	8.4±0.15	16.4±0.1	22.75±0.45	64	38	13
RM10	2	24.15±0.55	10.7±0.2	18.6±0.1	27.85±0.65	98	44	23
RM12	2	29.25±0.55	12.6±0.2	23.5±0.1	36.75±0.65	140	56.9	42
RM14	1	34.2±0.5	14.75±0.25	28.8±0.2	41.6±0.6	188	69	70

## ELECTRICAL CHARACTERISTICS

### WITHOUT AIR GAP

Part No.	AL-value (nH/N <sup>2</sup> )	Calculated output power*(W)	Part No.	AL-value (nH/N <sup>2</sup> )	Calculated output power*(W)
PC40RM4Z-12	680min. [1kHz, 0.5mA, 100Ts]	6.9[100kHz]	H5ARM6Z-12	3300±25% [1kHz, 0.5mA, 100Ts]	
PC50RM4Z-12	960±25% [1kHz, 0.5mA, 100Ts]	21[500kHz]	H5C3RM6Z-12	9100min. [10kHz, 10mV, 100Ts]	
H5ARM4Z-12	1240±25% [1kHz, 0.5mA, 100Ts]		PC40RM8Z-12	1950min. [1kHz, 0.5mA, 100Ts]	67[100kHz]
H5C2RM4Z-12	4950±30% [1kHz, 0.5mA, 100Ts]		H5ARM8Z-12	4300±25% [1kHz, 0.5mA, 100Ts]	
PC40RM5Z-12	1250min. [1kHz, 0.5mA, 100Ts]	16[100kHz]	H5C2RM8Z-12	15200±30% [1kHz, 0.5mA, 100Ts]	
PC50RM5Z-12	1340±25% [1kHz, 0.5mA, 100Ts]	34[500kHz]	PC40RM10Z-12	3630min. [1kHz, 0.5mA, 100Ts]	130[100kHz]
H5ARM5Z-12	2220±25% [1kHz, 0.5mA, 100Ts]		H5ARM10Z-12	6220±25% [1kHz, 0.5mA, 100Ts]	
H5C3RM5Z-12	7700min. [10kHz, 10mV, 100Ts]		H5C2RM10Z-12	20900±30% [1kHz, 0.5mA, 100Ts]	
PC40RM6Z-12	1600min. [1kHz, 0.5mA, 100Ts]	27[100kHz]	PC40RM12Z-12	4150min. [1kHz, 0.5mA, 100Ts]	344[100kHz]
PC50RM6Z-12	1700±25% [1kHz, 0.5mA, 100Ts]	55[500kHz]	PC40RM14Z-12	4600min. [1kHz, 0.5mA, 100Ts]	376[100kHz]

\* The values were obtained with forward converter mode.

# Ferrite Cores

# RM Series

For Power Supply and Signal Transformer  
RM Cores

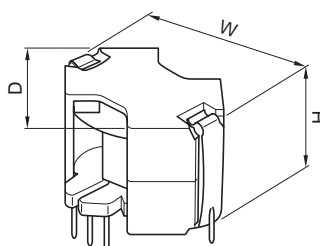
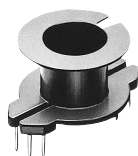
## WITH AIR GAP

Part No.	AL-value (nH/N <sup>2</sup> )[1kHz, 0.5mA, 100Ts]
PC40RM4AXXX*-22	63±3%, 100±3%, 160±3%
PC50RM4AXXX-22	63±3%, 100±3%, 160±3%
PC40RM5AXXX-22	63±3%, 100±3%, 160±3%
PC50RM5AXXX-22	63±3%, 100±3%, 160±3%
PC40RM6AXXX-22	100±3%, 160±3%, 250±3%
PC50RM6AXXX-22	100±3%, 160±3%, 250±3%
PC40RM8AXXX-22	100±3%, 160±3%, 250±3%
PC40RM10AXXX-22	160±3%, 250±3%, 400±3%
PC40RM12AXXX-22	160±3%, 250±3%, 400±3%
PC40RM14AXXX-22	160±3%, 250±3%, 400±3%

\*XXX: AL-value



## BOBBINS



Core type	Bobbin		Dimensions (mm)			Clamp
	Part No.	No. of pin terminal	W	D	H	
RM4	BRM-4-716SD* <sup>2</sup>	6	10	10	10.5	FRM-4-A
RM5	BRM-5-714CP* <sup>1</sup>	4	12.5	12.5	10.5	FRM-5-A
	BRM-5-716CP* <sup>1</sup>	6				
RM6	BRM-6-714CP* <sup>1</sup>	4	15	15	12.5	FRM-6-A
	BRM-6-716CP* <sup>1</sup>	6				
RM8	BRM-8-718CP* <sup>1</sup>	8	20	20	16.5	FRM-8-A
	BRM-8-7112CP* <sup>1</sup>	12				
RM10	BRM-10-7110SDN* <sup>2</sup>	10	24.7	24.7	18.7	FRM-10-A
	BRM-10-7112SD* <sup>2</sup>	12				
RM12	BRM-12-7111CP* <sup>1</sup>	11	30	30	23.6	FRM-12-A
	BRM-12-7112CP* <sup>1</sup>	12				
RM14	BRM-14-7110CP* <sup>1</sup>	10	35.6	35.6	29	FRM-14-A
	BRM-14-7112CP* <sup>1</sup>	12				

• Material: FR phenol, UL Grade: 94V-0, Pin material: \*<sup>1</sup> Steel wire (Solder plated) \*<sup>2</sup> Phosphor bronze(Solder plated)