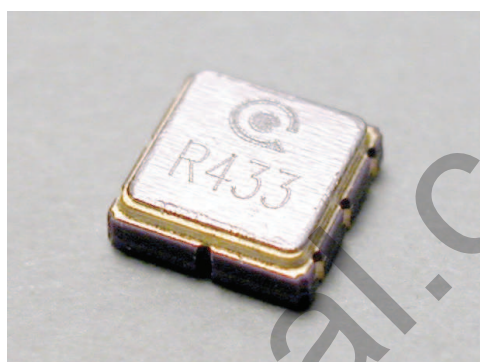




SAW Devices



www.signal.com.tr



| No. | SGS Report No. | Report Date |
|-----|----------------|-------------|
| | | |
| | | |
| | | |
| | | |
| | | |
| | | |
| | | |
| | | |
| | | |
| | | |



Attention

Products of Chequers Electronic (China) Limited (hereafter “Chequers”) shall not be used within any critical systems, which require especially high reliability. Critical systems mean, if such systems fail, one can reasonably expect that failure in such systems will result in damage to a third party’s life, body or property. In case products of Chequers must be used in critical systems, please consult with our sales representatives before using products from Chequers.



When using CQ products...

1. Do not apply voltage exceeding the rated voltage of components
2. Be certain not to operate outside the recommended operating temperature range of components
3. Be careful of soldering temperature and duration of components when soldering
4. Do not place soldering iron on the body of components
5. Be careful not to subject the terminals or leads of components to excessive force
6. Pay attention to the type of flux cleaning solvents that may damage components
7. Please contact our sales representatives or engineers before using the products specified in this specification sheet for the following equipment, which require high reliability, and if such equipment fails, which might damage to a third party’s life, body or property.
 - (i) Aerospace equipment
 - (ii) Medical equipment
 - (iii) Power plant equipment
 - (iv) Transportation equipment
 - (v) Traffic control equipment
 - (vi) Disaster control / prevention equipment
 - (vii) Undersea navigational equipment
 - (viii) Data-processing equipment
 - (ix) Or equipment that requires similar complexity and / or reliability of above equipment
8. Product specifications in this specification sheet are as of the date that is printed on, and they are for reference only. They are subject to change or discontinue without prior notice. Please check with our sales representative or engineers for details.
9. When using our products, please do not exceed the requirements and conditions specified in this specification sheet.
10. Should there be any doubt when using our products, please consult our sales representative or engineers before using our products.



SAW Resonators

RoHS Compliant
Directive 2002/95/EC

REACH Compliant
(15 SVHCs)
Regulation (EC)
No. 1907/2006

TS16949: 2002
Certified

• Dimension

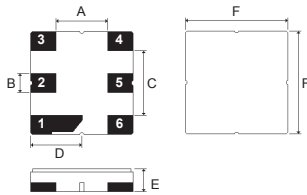
3.0x3.0mm

| Pin No. | Function* |
|---------|----------------|
| 2 | Input / output |
| 5 | Output / input |
| 1,3,4,6 | Ground |

* Pin function may vary

| Dimension | |
|-----------|------|
| A | 1.50 |
| B | 0.60 |
| C | 1.80 |
| D | 1.50 |
| E | 1.10 |
| F | 3.00 |

Unit: mm
Tolerance: ± 0.3 mm



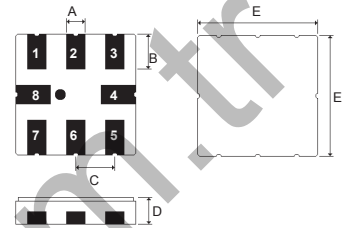
3.8x3.8mm (8-terminal)

| Pin No. | Function* |
|---------|----------------|
| 1 | Input |
| 2 | Input |
| 5 | Output |
| 6 | Output |
| 3, 7 | To be grounded |
| 4, 8 | Case ground |

* Pin function may vary

| Dimension | |
|-----------|------|
| A | 0.60 |
| B | 1.00 |
| C | 1.27 |
| D | 1.50 |
| E | 3.80 |

Unit: mm
Tolerance: ± 0.3 mm



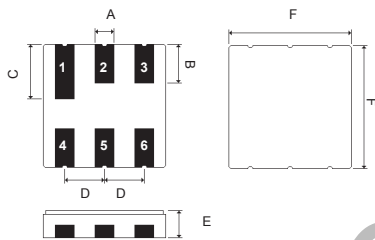
3.8x3.8mm (6-terminal)

| Pin No. | Function* |
|---------|----------------|
| 2 | Input / output |
| 5 | Output / input |
| 1,3,4,6 | Ground |

* Pin function may vary

| Dimension | |
|-----------|------|
| A | 0.60 |
| B | 1.00 |
| C | 1.60 |
| D | 1.27 |
| E | 1.20 |
| F | 3.80 |

Unit: mm
Tolerance: ± 0.3 mm



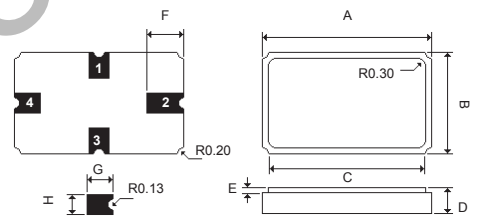
5.0x3.5mm

| Pin No. | Function* |
|---------|----------------|
| 1 | Input / output |
| 2 | Case ground |
| 3 | Output / input |
| 4 | Case ground |

* Pin function may vary

| Dimension | |
|-----------|------|
| A | 5.00 |
| B | 3.50 |
| C | 4.70 |
| D | 1.25 |
| E | 0.25 |
| F | 1.20 |
| G | 0.80 |
| H | 0.50 |

Unit: mm
Tolerance: ± 0.3 mm



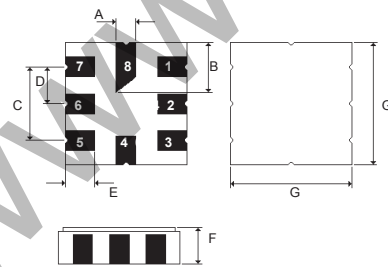
5.0x5.0mm

| Pin No. | Function* |
|---------|---------------|
| 1 | Input |
| 5 | Output |
| 2,7 | Input ground |
| 3,6 | Output ground |
| 4,8 | Case ground |

* Pin function may vary

| Dimension | |
|-----------|------|
| A | 0.60 |
| B | 2.08 |
| C | 2.54 |
| D | 1.27 |
| E | 1.20 |
| F | 1.35 |
| G | 5.00 |

Unit: mm
Tolerance: ± 0.3 mm



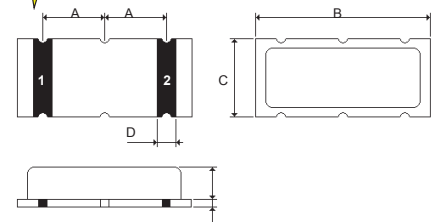
7.5x3.5mm

| Pin No. | Function* |
|---------|----------------|
| 1 | Input / output |
| 2 | Output / input |

* Pin function may vary

| Dimension | |
|-----------|------|
| A | 2.50 |
| B | 7.50 |
| C | 3.50 |
| D | 1.00 |
| E | 1.35 |
| F | 0.65 |

Unit: mm
Tolerance: ± 0.3 mm





TO-39

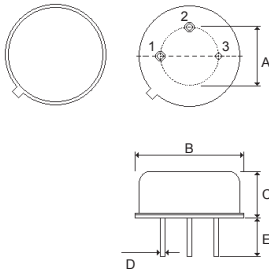
| Pin No. | Function* |
|---------|-----------|
| 1 | Input |
| 2 | Output |
| 3 | Ground |

* Pin function may vary

| Dimension | |
|-----------|-----------|
| A | 5.08 |
| B | 9.30 |
| C | 3.45 |
| D | 0.45±0.20 |
| E | 3.00±0.20 |

Unit: mm

Tolerance: ±0.3mm



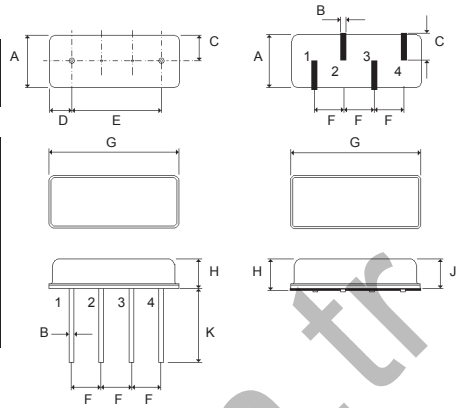
F-11 / F-11 SMD

| Pin No. | Function* |
|---------|----------------|
| 1 | Input / output |
| 2,3 | Ground |
| 4 | Output / input |

* Pin function may vary

| Dimension | F-11 / F-11 SMD | |
|-----------|-----------------|-----------|
| | F-11 | F-11 SMD |
| A | 4.50±0.5 | 4.50±0.5 |
| B | 0.45±0.2 | 0.60±0.05 |
| C | 2.25±0.2 | 2.45±0.2 |
| D | 1.70±0.2 | - |
| E | 7.60±0.2 | - |
| F | 2.54±0.2 | 2.54±0.2 |
| G | 11.00±0.5 | 11.00±0.5 |
| H | 3.20±0.3 | 4.10±0.3 |
| J | - | 3.40±0.3 |
| K | 6.3±0.5 | - |

Unit: mm



F-11

F-11 SMD

CW-2

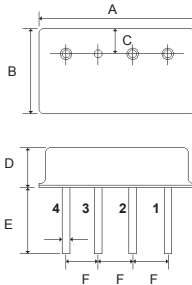
| Pin No. | Function* |
|---------|-------------------------|
| 1 | 1 st channel |
| 2 | 2 nd channel |
| 3 | Ground |
| 4 | Common |

* Pin function may vary

| Dimension | |
|-----------|------|
| A | 12.0 |
| B | 7.50 |
| C | 2.00 |
| D | 3.80 |
| E | 5.00 |
| F | 2.54 |

Unit: mm

Tolerance: ±0.3mm



www.signal.com.tw



● One-Port SAW Resonators for Automotive Electronics and Remote Controls

| Part Number | Center Frequency (MHz) | Insertion Loss (dB) | Package |
|--------------------|------------------------|---------------------|---------------|
| SR224M70A00T9A00B0 | 224.7 | 1.4 | TO-39 |
| SR265M00A00T9A00B0 | 265.0 | 1.8 | TO-39 |
| SR288M00A00T9A00B0 | 288.0 | 1.5 | TO-39 |
| SR293M12A00S2A00E0 | 293.125 | 1.6 | 5.0x3.5mm |
| SR295M00A00T9A00B0 | 295.0 | 1.5 | TO-39 |
| SR300M00A00S5A00E0 | 300.0 | 1.3 | 5.0x5.0mm |
| SR300M00A00S5A01E0 | 300.0 | 1.5 | 5.0x5.0mm |
| SR303M75A00T9A00B0 | 303.75 | 1.5 | TO-39 |
| SR303M82A00S2A00E0 | 303.825 | 1.2 | 5.0x3.5mm |
| SR303M82A00T9A00B0 | 303.825 | 1.5 | TO-39 |
| SR303M82A00T1A00E0 | 303.825 | 1.3 | F-11 |
| SR303M82A00S5A00E0 | 303.825 | 1.4 | 5.0x5.0mm |
| SR303M87A00T9A00B0 | 303.875 | 1.5 | TO-39 |
| SR303M87A00T1A00E0 | 303.875 | 1.3 | F-11 |
| SR303M87A00S2A00E0 | 303.875 | 1.6 | 5.0x3.5mm |
| SR304M30A00T9A00B0 | 304.3 | 1.4 | TO-39 |
| SR303M87A00S5A00E0 | 303.875 | 1.4 | 5.0x5.0mm |
| SR303M94A00S2A00E0 | 303.948 | 1.5 | 5.0x3.5mm |
| SR303M94A00S5A00E0 | 303.948 | 1.3 | 5.0x5.0mm |
| SR304M30A00T2A00E0 | 304.3 | 1.5 | F-11 SMD |
| SR304M30A00S2A00E0 | 304.3 | 1.5 | 5.0x3.5mm |
| SR305M67A00T9A00B0 | 305.675 | 1.8 | TO-39 |
| SR306M00A00T1A00E0 | 306.0 | 1.2 | F-11 |
| SR308M50A00T9A00B0 | 308.5 | 1.2 | TO-39 |
| SR309M00A00T9A00B0 | 309.0 | 1.3 | TO-39 |
| SR310M00A00T9A00B0 | 310.0 | 1.4 | TO-39 |
| SR310M00A00S2A00E0 | 310.0 | 1.1 | 5.0x3.5mm |
| SR310M00A00S5A00E0 | 310.0 | 1.3 | 5.0x5.0mm |
| SR311M00A00T9A00B0 | 311.0 | 1.5 | TO-39 |
| SR311M00A00S5A00E0 | 311.0 | 1.5 | 5.0x5.0mm |
| SR311M06A00S2A00E0 | 311.063 | 1.3 | 5.0x3.5mm |
| SR311M06A00S5A00E0 | 311.063 | 1.3 | 5.0x5.0mm |
| SR312M00A00T9A00B0 | 312.0 | 1.3 | TO-39 |
| SR312M00A00S2A00E0 | 312.0 | 1.3 | 5.0x3.5mm |
| SR312M00A00S5A00E0 | 312.0 | 1.2 | 5.0x5.0mm |
| SR314M50A00T9A00B0 | 314.5 | 1.5 | TO-39 |
| SR314M50A00S5A00E0 | 314.5 | 1.5 | F-11 |
| SR314M50A00S2A00E0 | 314.5 | 1.3 | 5.0x3.5mm |
| SR314M50A00S5A01E0 | 314.5 | 1.2 | 5.0x5.0mm |
| SR314M50A00T2A00E0 | 314.5 | 1.6 | F-11 SMD |
| SR315M00A00T9A00B0 | 315.0 | 1.5 | TO-39 |
| SR315M00A00T1A00E0 | 315.0 | 1.5 | F-11 |
| SR315M00A00S2A00E0 | 315.0 | 1.3 | 5.0x3.5mm |
| SR315M00A00S5A00E0 | 315.0 | 1.4 | 5.0x5.0mm |
| SR315M00A00S3A00E0 | 315.0 | 1.5 | 3.0x3.0mm |
| SR315M00A00S7A00E0 | 315.0 | 1.3 | 3.8x3.8mm (6) |
| SR315M00A00T2A00E0 | 315.0 | 1.6 | F-11 SMD |
| SR315M50A00T9A00B0 | 315.5 | 1.2 | TO-39 |
| SR315M50A00S2A00E0 | 315.5 | 1.5 | 5.0x3.5mm |
| SR315M50A00S5A00E0 | 315.5 | 1.5 | 5.0x5.0mm |
| SR315M50A00S7A00E0 | 315.5 | 1.5 | 3.8x3.8mm (6) |

| Part Number | Center Frequency (MHz) | Insertion Loss (dB) | Package |
|--------------------|------------------------|---------------------|-----------|
| SR316M02A00T9A00B0 | 316.025 | 1.2 | TO-39 |
| SR316M65A00T9A00B0 | 316.65 | 1.3 | TO-39 |
| SR316M80A00T9A00B0 | 316.8 | 1.3 | TO-39 |
| SR316M80A00T1A00E0 | 316.8 | 1.3 | F-11 |
| SR318M00A00T9A00B0 | 318.0 | 1.0 | TO-39 |
| SR318M00A00T1A00E0 | 318.0 | 1.0 | F-11 |
| SR318M00A00S2A00E0 | 318.0 | 1.2 | 5.0x3.5mm |
| SR318M00A00S5A00E0 | 318.0 | 1.5 | 5.0x5.0mm |
| SR319M00A00S2A00E0 | 319.5 | 1.3 | 5.0x3.5mm |
| SR319M50A00S5A00E0 | 319.5 | 1.3 | 5.0x5.0mm |
| SR320M00A00T9A00B0 | 320.0 | 1.5 | TO-39 |
| SR324M00A00S5A00E0 | 324.0 | 1.5 | 5.0x5.0mm |
| SR325M00A00T9A00B0 | 325.0 | 1.6 | TO-39 |
| SR325M00A00T1A00E0 | 325.0 | 1.6 | F-11 |
| SR330M00A00T9A00B0 | 330.0 | 1.2 | TO-39 |
| SR330M00A00T1A00E0 | 330.0 | 1.0 | F-11 |
| SR333M00A00T9A00B0 | 333.0 | 1.3 | TO-39 |
| SR333M00A00T1A00E0 | 333.0 | 1.3 | F-11 |
| SR340M00A00S5A00E0 | 340.0 | 1.3 | 5.0x5.0mm |
| SR345M00A00T9A00B0 | 345.0 | 1.4 | TO-39 |
| SR345M00A00S2A00E0 | 345.0 | 1.5 | 5.0x3.5mm |
| SR345M00A00S5A00E0 | 345.0 | 1.5 | 5.0x5.0mm |
| SR350M00A00T9A00B0 | 350.0 | 1.3 | TO-39 |
| SR350M00A00S5A00E0 | 350.0 | 1.5 | 5.0x5.0mm |
| SR360M00A00T9A00B0 | 360.0 | 1.5 | TO-39 |
| SR360M00A00T1A00E0 | 360.0 | 1.2 | F-11 |
| SR360M00A00S5A00E0 | 360.0 | 1.3 | 5.0x5.0mm |
| SR372M00A00S2A00E0 | 372.0 | 1.2 | 5.0x3.5mm |
| SR372M50A00S2A00E0 | 372.5 | 1.2 | 5.0x3.5mm |
| SR372M50A00S5A00E0 | 372.5 | 1.4 | 5.0x5.0mm |
| SR380M00A00T1A00E0 | 380.0 | 1.2 | F-11 |
| SR390M00A00T9A00B0 | 390.0 | 1.2 | TO-39 |
| SR390M00A00T1A00E0 | 390.0 | 1.4 | F-11 |
| SR390M00A00S5A00E0 | 390.0 | 1.2 | 5.0x5.0mm |
| SR390M00A00S5A00E0 | 390.0 | 1.3 | 5.0x5.0mm |
| SR392M85A00S5A00E0 | 392.85 | 1.3 | 5.0x5.0mm |
| SR395M00A00T9A00B0 | 395.0 | 1.5 | TO-39 |
| SR395M50A00T9A00B0 | 395.5 | 1.2 | TO-39 |
| SR395M50A00T1A00E0 | 395.5 | 1.3 | F-11 |
| SR396M00A00T9A00B0 | 396.0 | 1.3 | TO-39 |
| SR403M55A00T9A00B0 | 403.55 | 1.2 | TO-39 |
| SR403M55A00S2A00E0 | 403.55 | 1.3 | 5.0x3.5mm |
| SR403M55A00S5A00E0 | 403.55 | 1.3 | 5.0x5.0mm |
| SR403M96A00S2A00E0 | 403.966 | 1.3 | 5.0x3.5mm |
| SR403M96A00S5A00E0 | 403.966 | 1.5 | 5.0x5.0mm |
| SR407M30A00T9A00B0 | 407.3 | 1.3 | TO-39 |
| SR417M50A00T9A00B0 | 417.5 | 1.4 | TO-39 |
| SR417M50A00S5A00E0 | 417.5 | 1.5 | 5.0x5.0mm |
| SR418M00A00T9A00B0 | 418.0 | 1.5 | TO-39 |
| SR418M00A00T1A00E0 | 418.0 | 1.6 | F-11 |
| SR418M00A00S2A00E0 | 418.0 | 1.2 | 5.0x3.5mm |



Continued from the preceding page →

• One-Port SAW Resonators for Automotive Electronics and Remote Controls

| Part Number | Center Frequency (MHz) | Insertion Loss (dB) | Package |
|--------------------|------------------------|---------------------|---------------|
| SR418M00A00S5A00E0 | 418.0 | 1.6 | 5.0x5.0mm |
| SR419M95A00T1A00E0 | 419.95 | 1.4 | F-11 |
| SR423M22A00T9A00B0 | 423.22 | 1.3 | TO-39 |
| SR423M22A00T1A00E0 | 423.22 | 1.5 | F-11 |
| SR423M22A00S2A00E0 | 423.22 | 1.6 | 5.0x3.5mm |
| SR423M22A00S5A00E0 | 423.22 | 1.6 | 5.0x5.0mm |
| SR426M00A00S5A00E0 | 426.0 | 1.5 | 5.0x5.0mm |
| SR426M55A00S5A00E0 | 426.55 | 1.5 | 5.0x5.0mm |
| SR430M50A00T9A00B0 | 430.5 | 2.0 | TO-39 |
| SR430M50A00T1A00E0 | 430.5 | 2.2 | F-11 |
| SR430M65A00T9A00B0 | 430.65 | 2.0 | TO-39 |
| SR432M00A00T1A00E0 | 432.0 | 1.2 | F-11 |
| SR432M92A00T9A00B0 | 432.92 | 1.3 | TO-39 |
| SR432M92A00S5A00E0 | 432.92 | 1.3 | 5.0x5.0mm |
| SR433M38A00S5A00E0 | 433.385 | 1.3 | 5.0x5.0mm |
| SR433M42A00T9A00B0 | 433.42 | 1.8 | TO-39 |
| SR433M42A00S2A00E0 | 433.42 | 1.3 | 5.0x3.5mm |
| SR433M42A00S5A00E0 | 433.42 | 1.5 | 5.0x5.0mm |
| SR433M42A00S3A00E0 | 433.42 | 1.6 | 3.0x3.0mm |
| SR433M85A00T1A00E0 | 433.85 | 1.6 | F-11 |
| SR433M92A00T9A01B0 | 433.92 | 1.8 | TO-39 |
| SR433M92A01T9A02B0 | 433.92 | 1.5 | TO-39 |
| SR433M92A01T9A03B0 | 433.92 | 2.6 | TO-39 |
| SR433M92A00T9A04B0 | 433.92 | 1.3 | TO-39 |
| SR433M92A00T9A05B0 | 433.92 | 1.1 | TO-39 |
| SR433M92A00T1A01E0 | 433.92 | 1.3 | F-11 |
| SR433M92A00T1A02E0 | 433.92 | 1.5 | F-11 |
| SR433M92A00S2A00E0 | 433.92 | 1.5 | 5.0x3.5mm |
| SR433M92A00S5A01E0 | 433.92 | 1.2 | 5.0x5.0mm |
| SR433M92A00S5A02E0 | 433.92 | 2.0 | 5.0x5.0mm |
| SR433M92A00S5A03E0 | 433.92 | 2.5 | 5.0x5.0mm |
| SR433M92A00S3A00E0 | 433.92 | 1.6 | 3.0x3.0mm |
| SR433M92A00S7A00E0 | 433.92 | 1.5 | 3.8x3.8mm (6) |
| SR433M92A00S8A00E0 | 433.92 | 1.5 | 3.8x3.8mm (8) |
| SR433M92A00T2A00E0 | 433.92 | 1.8 | F-11 SMD |
| SR434M40A00T9A00B0 | 434.4 | 1.3 | TO-39 |
| SR434M42A00T9A00B0 | 434.42 | 1.3 | TO-39 |
| SR434M42A00S2A00E0 | 434.42 | 1.8 | 5.0x3.5mm |
| SR434M42A00S5A00E0 | 434.42 | 2.0 | 5.0x5.0mm |
| SR435M80A00T9A00B0 | 435.8 | 1.3 | TO-39 |
| SR440M80A00T9A00B0 | 440.8 | 2.5 | TO-39 |
| SR441M20A00T9A00B0 | 441.2 | 2.7 | TO-39 |
| SR441M20A00T1A00E0 | 441.2 | 2.8 | F-11 |
| SR447M69A00S2A00E0 | 447.699 | 1.3 | 5.0x3.5mm |
| SR447M69A00S5A00E0 | 447.699 | 1.0 | 5.0x5.0mm |
| SR447M72A00T9A00B0 | 447.725 | 1.5 | TO-39 |
| SR447M72A00S2A00E0 | 447.725 | 1.6 | 5.0x3.5mm |
| SR479M50A00T9A00B0 | 479.5 | 1.3 | TO-39 |
| SR479M50A00T1A00E0 | 479.5 | 1.5 | F-11 |

| Part Number | Center Frequency (MHz) | Insertion Loss (dB) | Package |
|--------------------|------------------------|---------------------|---------------|
| SR499M50A00S5A00E0 | 499.5 | 1.2 | 5.0x5.0mm |
| SR622M08A00T9A00B0 | 622.08 | 1.5 | TO-39 |
| SR643M75A00S5A00E0 | 643.75 | 1.5 | 5.0x5.0mm |
| SR800M00A00S7A00E0 | 800.0 | 1.0 | 3.8x3.8mm (6) |
| SR809M00A00T9A00B0 | 809.0 | 1.2 | TO-39 |
| SR809M00A00S5A00E0 | 809.0 | 1.3 | 5.0x5.0mm |
| SR809M00A00S7A00E0 | 809.0 | 0.9 | 3.8x3.8mm (6) |
| SR854M00A00S7A00E0 | 854.0 | 1.2 | 3.8x3.8mm (6) |
| SR857M30A00T9A00B0 | 857.3 | 1.0 | TO-39 |
| SR857M65A00S2A00E0 | 857.65 | 1.2 | 5.0x3.5mm |
| SR863M00A00T9A00B0 | 863.0 | 1.0 | TO-39 |
| SR868M00A00T9A00B0 | 868.0 | 1.2 | TO-39 |
| SR868M00A00S5A00E0 | 868.0 | 1.5 | 5.0x5.0mm |
| SR868M30A00T9A00B0 | 868.3 | 1.2 | TO-39 |
| SR868M30A00S5A00E0 | 868.3 | 1.5 | 5.0x5.0mm |
| SR868M30A00S3A00E0 | 868.3 | 1.5 | 3.0x3.0mm |
| SR868M35A00T9A00B0 | 868.35 | 1.2 | TO-39 |
| SR868M35A00T1A00E0 | 868.35 | 1.3 | F-11 |
| SR868M35A00S5A00E0 | 868.35 | 1.6 | 5.0x5.0mm |
| SR868M35A00S8A00E0 | 868.35 | 1.0 | 3.8x3.8mm (8) |
| SR868M35A00S3A00E0 | 868.35 | 1.5 | 3.0x3.0mm |
| SR868M35A00S2A00E0 | 868.35 | 1.7 | 5.0x3.5mm |
| SR868M75A00S5A00E0 | 868.75 | 1.8 | 5.0x5.0mm |
| SR868M95A00T9A00B0 | 868.95 | 1.3 | TO-39 |
| SR868M95A00S5A00E0 | 868.95 | 1.8 | 5.0x5.0mm |
| SR868M95A00S3A00E0 | 868.95 | 1.6 | 3.0x3.0mm |
| SR902M30A00S5A00E0 | 902.3 | 1.3 | 5.0x5.0mm |
| SR902M50A00S5A00E0 | 902.5 | 1.3 | 5.0x5.0mm |
| SR904M30A00T9A00B0 | 904.3 | 2.8 | TO-39 |
| SR904M30A00S2A00E0 | 904.3 | 3.4 | 5.0x3.5mm |
| SR905M80A00S5A00E0 | 905.8 | 1.5 | 5.0x5.0mm |
| SR910M00A00S5A00E0 | 910.0 | 1.2 | 5.0x5.0mm |
| SR912M00A00T9A00B0 | 912.0 | 1.3 | TO-39 |
| SR912M00A00S5A00E0 | 912.0 | 1.5 | 5.0x5.0mm |
| SR914M50A00S5A00E0 | 914.5 | 1.8 | 5.0x5.0mm |
| SR915M00A00T9A00B0 | 915.0 | 1.6 | TO-39 |
| SR915M00A00S2A00E0 | 915.0 | 1.6 | 5.0x3.5mm |
| SR915M00A00S5A00E0 | 915.0 | 1.8 | 5.0x5.0mm |
| SR915M00A00S3A00E0 | 915.0 | 1.3 | 3.0x3.0mm |
| SR916M50A00T9A00B0 | 916.5 | 1.2 | TO-39 |
| SR916M50A00S2A00E0 | 916.5 | 1.5 | 5.0x3.5mm |
| SR916M50A00S5A00E0 | 916.5 | 1.5 | 5.0x5.0mm |
| SR925M00A00S5A00E0 | 925.0 | 2.4 | 5.0x5.0mm |
| SR930M50A00T9A00B0 | 930.5 | 1.3 | TO-39 |
| SR950M00A00S5A00E0 | 950.0 | 1.3 | 5.0x5.0mm |
| SR980M00A00T9A00B0 | 980.0 | 1.3 | TO-39 |
| SR980M00A00S2A00E0 | 980.0 | 1.5 | 5.0x3.5mm |
| SR980M00A00S5A00E0 | 980.0 | 1.5 | 5.0x5.0mm |

- Other frequencies and specifications are also available upon request, please consult with our sales representatives.

- Available tolerance: ±40KHz, ±75KHz, ±100KHz, ±150KHz, ±250KHz (some tolerance levels may only be available for specific frequencies)



• Two-Port SAW Resonators

| Part Number | Center Frequency (MHz) | Insertion Loss (dB) | Package |
|--------------------|------------------------|---------------------|-----------|
| SR217M25A00T9B00B0 | 217.25 | 4.5 | TO-39 |
| SR284M00A00T9B00B0 | 284.0 | 5.0 | TO-39 |
| SR303M82A00S5B00E0 | 303.825 | 5.0 | 5.0x5.0mm |
| SR310M00A00T9B00B0 | 310.0 | 5.5 | TO-39 |
| SR315M00A00T9B00B0 | 315.0 | 5.0 | TO-39 |
| SR315M00A00T1B00B0 | 315.0 | 5.0 | F-11 |
| SR315M00A00S5B00E0 | 315.0 | 5.0 | 5.0x5.0mm |
| SR380M00A00T9B00B0 | 380.0 | 6.0 | TO-39 |
| SR384M05A00T9B00B0 | 384.05 | 6.0 | TO-39 |
| SR392M00A00T9B00B0 | 392.0 | 5.5 | TO-39 |
| SR403M55A00T9B00B0 | 403.55 | 6.0 | TO-39 |
| SR403M55A00S5B00E0 | 403.55 | 5.0 | 5.0x5.0mm |
| SR418M00A00T9B00B0 | 418.0 | 6.0 | TO-39 |
| SR418M00A00S5B00E0 | 418.0 | 6.0 | 5.0x5.0mm |
| SR423M22A00T9B00B0 | 423.22 | 6.0 | TO-39 |
| SR433M42A00T9B00B0 | 433.42 | 6.0 | TO-39 |

| Part Number | Center Frequency (MHz) | Insertion Loss (dB) | Package |
|--------------------|------------------------|---------------------|-----------|
| SR433M92A00T9B00B0 | 433.92 | 6.0 | TO-39 |
| SR433M92A00T1B00B0 | 433.92 | 6.0 | F-11 |
| SR433M92A00S5B00E0 | 433.92 | 6.0 | 5.0x5.0mm |
| SR433M92A00S2B00E0 | 433.92 | 6.0 | 5.0x3.5mm |
| SR780M00A00S5B00E0 | 780.0 | 6.5 | 5.0x5.0mm |
| SR824M25A00T9B00B0 | 824.25 | 6.5 | TO-39 |
| SR865M00A00T9B00B0 | 865.0 | 6.0 | TO-39 |
| SR868M30A00T9B00B0 | 868.3 | 6.0 | TO-39 |
| SR868M30A00S5B00E0 | 868.3 | 6.0 | 5.0x5.0mm |
| SR868M35A00S5B00E0 | 868.35 | 6.5 | 5.0x5.0mm |
| SR873M00A00S5B00E0 | 873.0 | 7.0 | 5.0x5.0mm |
| SR906M00A00T9B00B0 | 906.0 | 6.5 | TO-39 |
| SR915M00A00S5B00E0 | 915.0 | 6.5 | 5.0x5.0mm |
| SR916M50A00S5B00E0 | 916.5 | 6.5 | 5.0x5.0mm |
| SR934M00A00T9B00B0 | 934.0 | 7.0 | TO-39 |

- Other frequencies and specifications are also available upon request, please consult with our sales representatives.

- Available tolerance: $\pm 40\text{KHz}$, $\pm 75\text{KHz}$, $\pm 100\text{KHz}$, $\pm 150\text{KHz}$, $\pm 250\text{KHz}$ (some tolerance levels might only be available for specific frequencies)

• SAW Resonators for RF Modulator

| Center Frequency (MHz) | Insertion Loss (dB) | Tolerance (KHz) | Application(s) | Package |
|------------------------|---------------------|-----------------|----------------|---------|
| 49.74 / 57.74 | 5.0 max. | ± 80 | PAL 1/2 | CW-2 |
| 65.74 / 77.24 | 4.0 max. | ± 80 | PAL 3/4 | |
| 77.24 / 85.24 | 4.0 max. | ± 80 | PAL 4/5 | |
| 55.24 / 61.24 | 5.0 / 4.0 max. | ± 80 | NTSC 2/3 | |
| 61.24 / 67.24 | 4.0 max. | ± 80 | NTSC 3/4 | |
| 55.24 / 62.24 | 4.0 max. | ± 80 | PAL BG 3/4 | |
| 46.24 / 57.24 | 6.0 / 4.0 max. | ± 80 | A 0/1 | |
| 91.24 / 97.24 | 3.2 max. | ± 80 | J 1/2 | |

- Other frequencies and specifications are also available upon request, please consult with our sales representatives.



• SAW Resonators for CATV Modulator

| Center Frequency (MHz) | Tolerance (KHz) | Insertion Loss (dB) | Package | Center Frequency (MHz) | Tolerance (KHz) | Insertion Loss (dB) | Package | | | |
|------------------------|-----------------|---------------------|---------|------------------------|-----------------|---------------------|---------|--|--|--|
| 49.75 | ±20, ±50, ±80 | 5.0 max. | CW-2 | 150.25 | ±20, ±50, ±80 | 4.0 max. | CW-2 | | | |
| 57.75 | ±20, ±50, ±80 | 4.0 max. | | 158.25 | ±20, ±50, ±80 | 4.0 max. | | | | |
| 65.75 | ±20, ±50, ±80 | 4.0 max. | | 166.25 | ±20, ±50, ±80 | 4.0 max. | | | | |
| 77.25 | ±20, ±50, ±80 | 4.0 max. | | 174.25 | ±20, ±50, ±80 | 4.0 max. | | | | |
| 85.25 | ±20, ±50, ±80 | 4.0 max. | | 182.25 | ±20, ±50, ±80 | 4.0 max. | | | | |
| 168.25 | ±20, ±50, ±80 | 4.0 max. | | 190.25 | ±20, ±50, ±80 | 4.0 max. | | | | |
| 176.25 | ±20, ±50, ±80 | 4.0 max. | | 198.25 | ±20, ±50, ±80 | 4.0 max. | | | | |
| 184.25 | ±20, ±50, ±80 | 4.0 max. | | 262.25 | ±20, ±50, ±80 | 4.0 max. | | | | |
| 192.25 | ±20, ±50, ±80 | 4.0 max. | | 270.25 | ±20, ±50, ±80 | 4.0 max. | | | | |
| 200.25 | ±20, ±50, ±80 | 4.0 max. | | 278.25 | ±20, ±50, ±80 | 4.0 max. | | | | |
| 208.25 | ±20, ±50, ±80 | 4.0 max. | | 286.25 | ±20, ±50, ±80 | 4.0 max. | | | | |
| 216.25 | ±20, ±50, ±80 | 4.0 max. | | 294.25 | ±20, ±50, ±80 | 4.0 max. | | | | |
| 535.25 | ±250 | 2.5 max. | | CW-2 | | | | | | |
| 607.25 | ±250 | 2.5 max. | | | | | | | | |
| 615.25 | ±250 | 2.5 max. | | | | | | | | |
| 687.25 | ±250 | 2.5 max. | | | | | | | | |
| 112.25 | ±20, ±50, ±80 | 4.0 max. | | | | | | | | |
| 120.25 | ±20, ±50, ±80 | 4.0 max. | | | | | | | | |
| 128.25 | ±20, ±50, ±80 | 4.0 max. | | | | | | | | |
| 136.25 | ±20, ±50, ±80 | 4.0 max. | | | | | | | | |
| 144.25 | ±20, ±50, ±80 | 4.0 max. | | | | | | | | |
| 152.25 | ±20, ±50, ±80 | 4.0 max. | | | | | | | | |
| 160.25 | ±20, ±50, ±80 | 4.0 max. | | | | | | | | |
| 224.25 | ±20, ±50, ±80 | 4.0 max. | CW-2 | | | | | | | |
| 232.25 | ±20, ±50, ±80 | 4.0 max. | | | | | | | | |
| 240.25 | ±20, ±50, ±80 | 4.0 max. | | | | | | | | |
| 248.25 | ±20, ±50, ±80 | 4.0 max. | | | | | | | | |
| 87.75 | ±20, ±50, ±80 | 4.0 max. | | | | | | | | |
| 95.75 | ±20, ±50, ±80 | 4.0 max. | | | | | | | | |
| 103.75 | ±20, ±50, ±80 | 4.0 max. | | | | | | | | |
| 115.25 | ±20, ±50, ±80 | 4.0 max. | | | | | | | | |
| 123.25 | ±20, ±50, ±80 | 4.0 max. | | | | | | | | |
| 206.25 | ±20, ±50, ±80 | 4.0 max. | | | | | | | | |
| 214.25 | ±20, ±50, ±80 | 4.0 max. | CW-2 | | | | | | | |
| 222.25 | ±20, ±50, ±80 | 4.0 max. | | | | | | | | |
| 230.25 | ±20, ±50, ±80 | 4.0 max. | | | | | | | | |
| 238.25 | ±20, ±50, ±80 | 4.0 max. | | | | | | | | |
| 246.25 | ±20, ±50, ±80 | 4.0 max. | | | | | | | | |
| 254.25 | ±20, ±50, ±80 | 4.0 max. | | | | | | | | |
| 254.625 | ±20, ±50, ±80 | 4.0 max. | | | | | | | | |
| 258.625 | ±20, ±50, ±80 | 4.0 max. | | | | | | | | |
| 262.625 | ±20, ±50, ±80 | 4.0 max. | | | | | | | | |
| 266.625 | ±20, ±50, ±80 | 4.0 max. | | | | | | | | |
| 270.625 | ±20, ±50, ±80 | 4.0 max. | | | | | | | | |
| 274.625 | ±20, ±50, ±80 | 4.0 max. | | | | | | | | |
| 278.625 | ±20, ±50, ±80 | 4.0 max. | | | | | | | | |
| 282.625 | ±20, ±50, ±80 | 4.0 max. | | | | | | | | |
| 286.625 | ±20, ±50, ±80 | 4.0 max. | | | | | | | | |
| 290.625 | ±20, ±50, ±80 | 4.0 max. | | | | | | | | |
| 294.625 | ±20, ±50, ±80 | 4.0 max. | | | | | | | | |
| 298.625 | ±20, ±50, ±80 | 4.0 max. | | | | | | | | |

- Other frequencies and specifications are also available upon request, please consult with our sales representatives.



• SAW Resonators for FM Broadcasting

| Center Frequency (MHz) | Tolerance (KHz) | Insertion Loss (dB) | Package | Center Frequency (MHz) | Tolerance (KHz) | Insertion Loss (dB) | Package |
|------------------------|-----------------|---------------------|---------|------------------------|-----------------|---------------------|---------|
| 86.5 | ±60 ±80 | 4.0 max. | CW-2 | 108.5 | ±60 ±80 | 4.0 max. | CW-2 |
| 92.35 | ±60 ±80 | | | 108.7 | ±60 ±80 | | |
| 98.6 | ±60 ±80 | | | 109.1 | ±60 ±80 | | |
| 98.65 | ±60 ±80 | | | 109.6 | ±60 ±80 | | |
| 98.7 | ±60 ±80 | | | 110.1 | ±60 ±80 | | |
| 99.1 | ±60 ±80 | | | 110.4 | ±60 ±80 | | |
| 99.3 | ±60 ±80 | | | 110.7 | ±60 ±80 | | |
| 99.5 | ±60 ±80 | | | 110.9 | ±60 ±80 | | |
| 99.9 | ±60 ±80 | | | 111.1 | ±60 ±80 | | |
| 100.7 | ±60 ±80 | | | 111.2 | ±60 ±80 | | |
| 101.15 | ±60 ±80 | | | 111.4 | ±60 ±80 | | |
| 101.3 | ±60 ±80 | | | 111.5 | ±60 ±80 | | |
| 101.7 | ±60 ±80 | | | 111.8 | ±60 ±80 | | |
| 101.9 | ±60 ±80 | | | 111.9 | ±60 ±80 | | |
| 102.1 | ±60 ±80 | | | 112.2 | ±60 ±80 | | |
| 102.4 | ±60 ±80 | | | 112.7 | ±60 ±80 | | |
| 102.5 | ±60 ±80 | | | 113.1 | ±60 ±80 | | |
| 103.5 | ±60 ±80 | | | 113.2 | ±60 ±80 | | |
| 103.9 | ±60 ±80 | | | 113.3 | ±60 ±80 | | |
| 104.2 | ±60 ±80 | | | 113.4 | ±60 ±80 | | |
| 104.5 | ±60 ±80 | | | 113.7 | ±60 ±80 | | |
| 104.7 | ±60 ±80 | | | 113.9 | ±60 ±80 | | |
| 104.9 | ±60 ±80 | | | 114.1 | ±60 ±80 | | |
| 105.3 | ±60 ±80 | | | 114.2 | ±60 ±80 | | |
| 105.5 | ±60 ±80 | | | 114.6 | ±60 ±80 | | |
| 106.4 | ±60 ±80 | | | 114.8 | ±60 ±80 | | |
| 106.5 | ±60 ±80 | | | 115.2 | ±60 ±80 | | |
| 106.7 | ±60 ±80 | | | 115.5 | ±60 ±80 | | |
| 106.8 | ±60 ±80 | | | 115.8 | ±60 ±80 | | |
| 107.1 | ±60 ±80 | | | 116.3 | ±60 ±80 | | |
| 107.3 | ±60 ±80 | | | 116.7 | ±60 ±80 | | |
| 107.5 | ±60 ±80 | | | 116.9 | ±60 ±80 | | |
| 107.7 | ±60 ±80 | | | 117.2 | ±60 ±80 | | |
| 108.0 | ±60 ±80 | | | 118.0 | ±60 ±80 | | |
| 108.2 | ±60 ±80 | 118.1 | ±60 ±80 | | | | |
| 108.4 | ±60 ±80 | 118.7 | ±60 ±80 | | | | |

- Other frequencies and specifications are also available upon request, please consult with our sales representatives.



IF Filters for Multimedia

RoHS Compliant
Directive 2002/95/EC

REACH Compliant
(15 SVHCs)
Regulation (EC)
No. 1907/2006

TS16949: 2002
Certified

• Dimension

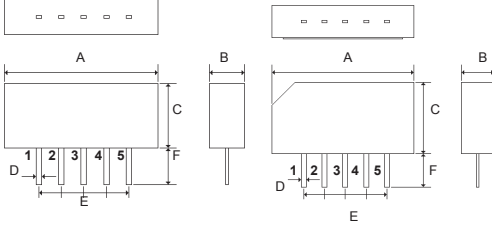
SIP5D / SIP5K

| Pin No. | Function* |
|---------|--------------|
| 1 | Input |
| 2 | Input ground |
| 3 | Ground |
| 4 | Output |
| 5 | Output |

* Pin function may vary

| | Dimension | |
|---|-----------|--------|
| | SIP5D | SIP5K |
| A | 14.5 | 17.3 |
| B | 3.8 | 3.9 |
| C | 5.8 | 8.7 |
| D | 0.54 | 0.64 |
| E | 4x2.54 | 4x2.54 |
| F | 3.5 | 3.5 |

Unit: mm
Tolerance: $\pm 0.3\text{mm}$



SIP5D

SIP5K

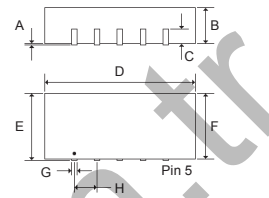
SIP5S

| Pin No. | Function* |
|---------|--------------|
| 1 | Input |
| 2 | Input ground |
| 3 | Ground |
| 4 | Output |
| 5 | Output |

* Pin function may vary

| Dimension | |
|-----------|------|
| A | 0.5 |
| B | 2.5 |
| C | 1.1 |
| D | 13.7 |
| E | 5.4 |
| F | 4.8 |
| G | 0.54 |
| H | 2.54 |

Unit: mm
Tolerance: $\pm 0.3\text{mm}$



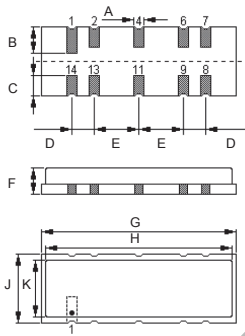
ARC11A

| Pin No. | Function* |
|-----------|--------------|
| 1 | Input |
| 14 | Input ground |
| 4,9,11,13 | Case ground |
| 2,6 | Ground |
| 7 | Output |
| 8 | Output |

* Pin function may vary

| Dimension | |
|-----------|------|
| A | 0.7 |
| B | 1.5 |
| C | 1.1 |
| D | 1.27 |
| E | 2.54 |
| F | 1.5 |
| G | 11.0 |
| H | 10.6 |
| J | 4.0 |
| K | 3.3 |

Unit: mm
Tolerance: $\pm 0.3\text{mm}$



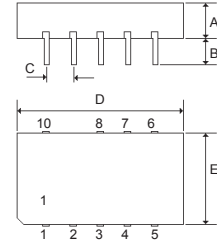
DIP10K

| Pin No. | Function* |
|---------|-----------------------|
| 1 | Input |
| 2 | Input ground |
| 3,8 | Chip carrier - ground |
| 4,5 | Output |
| 6,7 | Not connected |
| 9 | Free |
| 10 | Switching input |

* Pin function may vary

| Dimension | |
|-----------|------|
| A | 4.8 |
| B | 4.0 |
| C | 2.54 |
| D | 18.5 |
| E | 11.5 |

Unit: mm
Tolerance: $\pm 0.3\text{mm}$





● IF Filters for Multimedia in SMD package

| Part Number | Center Frequency (MHz) | Insertion Attenuation (dB) | Pass Bandwidth (3dB) (MHz) | Application | Package |
|---------------|------------------------|----------------------------|----------------------------|------------------|---------|
| CQX2648PS00E0 | 44.000 | 14.5 | 6.0 | Digital Receiver | ARC11A |
| CQX2649PS00E0 | 36.125 | 20.5 | 7.8 | Digital Cable TV | ARC11A |
| CQX2698PS00E0 | 38.912 | 19.0 | 1.5 | DAB | ARC11A |

- Other frequencies and specifications are also available upon request, please consult with our sales representatives.

● IF Filters for Inter-carrier Application

| Part Number | Picture Carrier Frequency (MHz) | PC-SC Distance (MHz) | Sound Carrier (dB) | Color Carrier (dB) | Package |
|-------------------|---------------------------------|----------------------|--------------------|--------------------|---------|
| SF38M007254KM005K | 38.00 | 5.5-6.5 | 42, 32 | 1.4 | SIP5K |
| SF38M007253KM005K | 38.00 | 5.5-6.5 | 20, 20 | 1.2 | SIP5K |
| SF38M002957KM005K | 38.00 | 5.5-6.5 | 16, 16 | 2.5 | SIP5K |
| SF38M002972KM005K | 38.00 | 5.5-6.5 | 15, 16 | 1.2 | SIP5K |
| SF38M002959KM005K | 38.00 | 5.5-6.5 | 17, 19 | 1 | SIP5K |
| SF38M001973MD005D | 38.00 | 4.5 | 20.00 | 1.1 | SIP5D |
| SF38M002979KM005K | 38.00 | 5.5-6.5 | 16, 16 | 1.1 | SIP5K |
| SF38M909650KD005D | 38.90 | - | - | - | SIP5D |
| SF38M903953KD005D | 38.90 | - | - | - | SIP5D |
| SF38M901872GM005K | 38.90 | 5.5 | 20.00 | 3.9 | SIP5K |
| SF38M901865GM005K | 38.90 | 5.5 | 19.00 | 2.7 | SIP5K |
| SF38M904960KD005D | 38.90 | 5.5 | 20.00 | 1.0 | SIP5D |
| SF38M901962GM005K | 38.90 | 5.5 | 20.00 | 1.0 | SIP5K |
| SF44M061967MD005D | 44.06 | 5.0 | 20.00 | 1.0 | SIP5D |
| SF45M751962MM005K | 45.75 | 4.5 | 20.00 | 5.2 | SIP5K |
| SF45M751967MD005D | 45.75 | 4.5 | 19.00 | 1.0 | SIP5D |
| SF45M751862MM005K | 45.75 | 4.5 | 14.00 | 1.6 | SIP5K |
| SF45M751967MM005K | 45.75 | 4.5 | 13.00 | 0.3 | SIP5K |
| SF58M751952ND005D | 58.75 | 4.5 | 19.00 | 2.0 | SIP5D |

- Other frequencies and specifications are also available upon request, please consult with our sales representatives.

● IF Filters for Audio Application

| Part Number | Sound Carrier Frequency (MHz) | PC-SC Distance (MHz) | Picture Carrier (dB) | Package |
|-------------------|-------------------------------|----------------------|----------------------|---------|
| SF31M509455KM005K | 31.50~32.50 | 5.5~6.5 | -48 | SIP5K |
| SF31M509455KD005D | 31.50~32.50 | 5.5~6.5 | -48 | SIP5D |
| SF31M509352KD005D | 31.50~33.50 | 4.5~6.5 | -48 | SIP5D |
| SF32M409650KM005D | 32.40~32.90 | 5.5~6.5 | -47 | SIP5D |
| SF32M409453KM005K | 32.40~32.90 | 5.5~6.5 | -46 | SIP5K |
| SF32M409453KN005D | 32.40~32.90 | 5.5~6.5 | -46 | SIP5D |
| SF32M409650KM005K | 32.40~32.90 | 5.5~6.5 | -47 | SIP5K |
| SF32M409650KS005S | 32.40~32.90 | 5.5~6.5 | -47 | SIP5K |
| SF32M409650KS005D | 32.40~32.90 | 5.5~6.5 | -47 | SIP5D |
| SF33M409353GM005D | 33.40 | 5.5~5.85 | -52 | SIP5D |
| SF33M409356KM005K | 33.40 | 5.5~5.85 | -52 | SIP5K |
| SF33M409653KD005D | 33.40 | 5.5~5.85 | -52 | SIP5D |
| SF40M409659KD005D | 40.40 | -5.85, -6.5 | -46 | SIP5D |
| SF40M409656KM005K | 40.40 | -5.85, -6.5 | -46 | SIP5K |
| SF40M409656KD005D | 40.40 | -5.85, -6.5 | -46 | SIP5D |
| SF40M409456KD005D | 40.40 | -5.85, -6.5 | -46 | SIP5D |
| SF41M259370MM005K | 41.25 | 4.5 | -60 | SIP5K |
| SF41M259260MM005K | 41.25 | 4.5 | 0 | SIP5K |
| SF41M259370MN005D | 41.25 | 4.5 | -60 | SIP5D |

- Other frequencies and specifications are also available upon request, please consult with our sales representatives.



● IF Filters for Video Application

| Part Number | Picture Carrier Frequency (MHz) | PC-SC Distance (MHz) | Sound Carrier (dB) | Color Carrier (dB) | Package |
|--------------------|---------------------------------|----------------------|--------------------|--------------------|---------|
| SF38M002955KD005D | 38.0 | - | - | - | SIP5D |
| SF38M002955KM005K | 38.0 | - | - | - | SIP5K |
| SF38M003953MD005D | 38.0 | - | - | - | SIP5D |
| SF38M903957KD005D | 38.9 | - | - | - | SIP5D |
| SF38M907257KD005S | 38.9 | 4.5 | 37 | 26 | SIP5S |
| SF38M907252KM005K | 38.9 | 4.5 | 37 | 26 | SIP5K |
| SF38M907257KN005D | 38.9 | 4.5 | 37 | 2.6 | SIP5D |
| SF38M902966KM005K | 38.9 | - | - | - | SIP5K |
| SF38M907257KD005D | 38.9 | 4.5 | 37 | 26 | SIP5D |
| SF38M907262KD005D | 38.9 | - | - | - | SIP5D |
| SF38M90811FCPL005D | 38.9 | - | - | - | SIP5D |
| SF38M903951MM005K | 38.9 | - | - | - | SIP5K |
| SF38M903953KM005K | 38.9 | 5.5~6.5 | 24, 50 | 1 | SIP5K |
| SF38M902966KD005D | 38.9 | - | - | - | SIP5D |
| SF38M903953KN005D | 38.9 | 5.5~6.5 | 24, 50 | 1 | SIP5D |
| SF38M903962GM005K | 38.9 | 5.5 | 52 | 3 | SIP5K |
| SF38M903965KD005D | 38.9 | 5.5 | 18, 57 | 0.6 | SIP5D |
| SF38M906259KK005K | 38.9 | 6.0~6.5 | 50, 56 | 0.8 | DIP10K |
| SF38M907257KD005D | 38.9 | 4.5 | 37 | 2.6 | SIP5D |
| SF38M907257KM005K | 38.9 | 4.5 | 37 | 2.6 | SIP5K |
| SF38M902977KM005K | 38.9 | - | - | - | SIP5K |

- Other frequencies and specifications are also available upon request, please consult with our sales representatives.



• Bandpass Filters for Digital TV, Digital Radio and V.O.D.

| Part Number | Center Frequency (MHz) | Bandwidth (KHz) | Package |
|-------------------|------------------------|-----------------|---------|
| SF36M007253XD005D | 36.00 | 7.7, 8.3 | SIP5D |
| SF36M006857XD005D | 36.00 | 8.1 | SIP5D |
| SF36M127355XP005S | 36.125 | 6.0 | SIP5S |
| SF36M127357XP005S | 36.125 | 7.0 | SIP5S |
| SF36M127350XP005S | 36.125 | 8.0 | SIP5S |
| SF36M126966XN005D | 36.125 | 8.0 | SIP5D |
| SF36M127251XD005D | 36.125 | 7.0, 8.0 | SIP5D |
| SF36M126867XD005D | 36.125 | 8.0 | SIP5D |
| SF36M126874XD005D | 36.125 | 8.0 | SIP5D |
| SF36M126966XD005S | 36.125 | 8.0 | SIP5S |
| SF36M126865XD005S | 36.125 | 6.0 | SIP5S |
| SF36M126872XD005S | 36.125 | 7.0 | SIP5S |
| SF36M126872XD005D | 36.125 | 7.0 | SIP5D |
| SF36M127251XD005S | 36.125 | 7.0, 8.0 | SIP5S |
| SF36M126966XM005K | 36.125 | 8.0 | SIP5K |
| SF36M126966XD005D | 36.125 | 8.0 | SIP5D |
| SF36M127255XN005D | 36.125 | 8.0 | SIP5D |
| SF36M127255XN005D | 36.125 | 8.0 | SIP5D |
| SF36M127251XD005D | 36.125 | 7.0, 8.0 | SIP5D |
| SF36M126865XD005D | 36.125 | 6.0 | SIP5D |
| SF36M126872XD005D | 36.125 | 7.0 | SIP5D |
| SF36M126872XD005D | 36.125 | 7.0 | SIP5D |
| SF36M126966XD005D | 36.125 | 8.0 | SIP5D |
| SF36M126865XD005D | 36.125 | 6.0 | SIP5D |
| SF36M126865XD005D | 36.125 | 6.0 | SIP5D |
| SF36M126865XD005S | 36.125 | 6.0 | SIP5S |
| SF36M127251XD005D | 36.125 | 7.0, 8.0 | SIP5D |
| SF36M127251XD005S | 36.125 | 7.0, 8.0 | SIP5S |
| SF36M126874XD005D | 36.125 | 8.0 | SIP5D |
| SF36M126874XD005S | 36.125 | 8.0 | SIP5S |
| SF38M916922XD005D | 38.912 | 1.5 | SIP5D |
| SF38M916922XM005K | 38.912 | 1.5 | SIP5K |
| SF43M756864XD005D | 43.75 | 6.2 | SIP5D |
| SF43M756864XD005D | 43.75 | 6.2 | SIP5D |
| SF43M816964XD005D | 43.81 | 6.0 | SIP5D |
| SF43M816964XD005D | 43.81 | 6.0 | SIP5D |
| SF44M006941XD005D | 44.00 | 0.5 | SIP5D |
| SF44M066965XD005D | 44.06 | 6.1 | SIP5D |
| SF44M066965XM005K | 44.06 | 6.1 | SIP5K |
| SF44M066965XD005D | 44.06 | 6.1 | SIP5D |

- Other frequencies and specifications are also available upon request, please consult with our sales representatives.



SAW Filters & SAW Duplexers

RoHS Compliant
Directive 2002/95/EC

REACH Compliant
(15 SVHCs)
Regulation (EC)
No. 1907/2006

TS16949: 2002
Certified

• Dimension

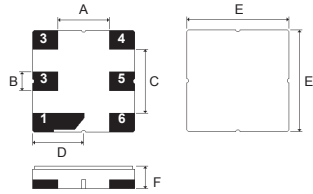
3.0x3.0mm

| Pin No. | Function* |
|---------|----------------|
| 2 | Input / output |
| 5 | Output / input |
| 1,3,4,6 | Ground |

* Pin function may vary

| Dimension | |
|-----------|-----|
| A | 1.5 |
| B | 0.6 |
| C | 1.8 |
| D | 1.5 |
| E | 3.0 |
| F | 1.1 |

Unit: mm
Tolerance: ±0.3mm



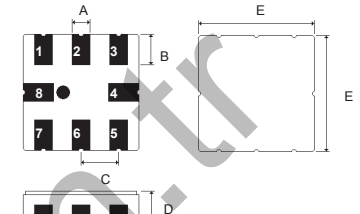
3.8x3.8mm, 8-terminal

| Pin No. | Function* |
|---------|----------------|
| 1 | Input |
| 2 | Input ground |
| 5 | Output |
| 6 | Output ground |
| 3, 7 | To be grounded |
| 4, 8 | Case ground |

* Pin function may vary

| Dimension | |
|-----------|------|
| A | 0.6 |
| B | 1.0 |
| C | 1.27 |
| D | 1.5 |
| E | 3.8 |

Unit: mm
Tolerance: ±0.3mm



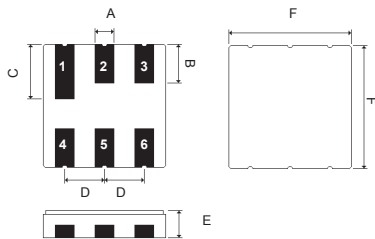
3.8x3.8mm, 6-terminal

| Pin No. | Function* |
|---------|----------------|
| 2 | Input / output |
| 5 | Output / input |
| 1,3,4,6 | Ground |

* Pin function may vary

| Dimension | |
|-----------|------|
| A | 0.6 |
| B | 1.0 |
| C | 1.6 |
| D | 1.27 |
| E | 1.2 |
| F | 3.8 |

Unit: mm
Tolerance: ±0.3mm



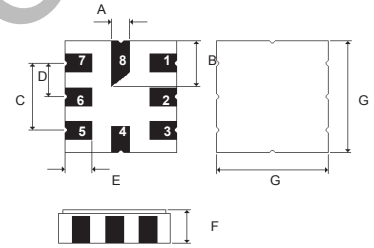
5.0x5.0mm

| Pin No. | Function* |
|---------|---------------|
| 1 | Input |
| 5 | Output |
| 2,7 | Input ground |
| 3,6 | Output ground |
| 4,8 | Case ground |

* Pin function may vary

| Dimension | |
|-----------|------|
| A | 0.6 |
| B | 2.08 |
| C | 2.54 |
| D | 1.27 |
| E | 1.2 |
| F | 1.35 |
| G | 5.0 |

Unit: mm
Tolerance: ±0.3mm



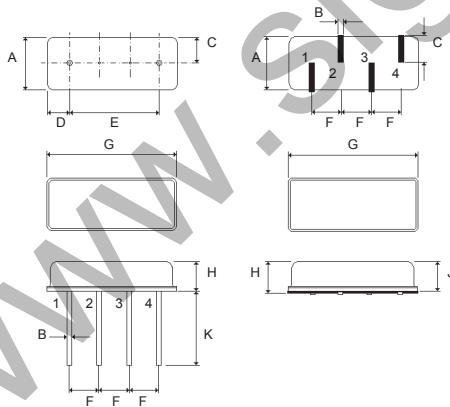
F-11 / F-11 SMD

| Pin No. | Function* |
|---------|----------------|
| 1 | Input / output |
| 2,3 | Ground |
| 4 | Output / input |

* Pin function may vary

| Dimension | F-11 | F-11 SMD |
|-----------|----------|----------|
| | A | 4.5±0.5 |
| B | 0.45±0.2 | 0.6±0.05 |
| C | 2.25±0.2 | 2.45±0.2 |
| D | 1.7±0.2 | - |
| E | 7.6±0.2 | - |
| F | 2.54±0.2 | 2.54±0.2 |
| G | 11.0±0.5 | 11.0±0.5 |
| H | 3.2±0.3 | 4.1±0.3 |
| J | - | 3.4±0.3 |
| K | 6.3±0.5 | - |

Unit: mm
Tolerance: ±0.3mm



F-11

F-11 SMD



TO-39-2 / TO-39-3 / TO-39 / TO-39-4

| Pin No. | Function* |
|---------|----------------|
| 1 | Input / output |
| 2 | Output / input |
| 3 | Ground |

* Pin function may vary

| Dimension | |
|-----------|----------|
| A | ∅5.08 |
| B | ∅9.15 |
| C | 3.5 max. |
| D | 2.0 min. |
| E | ∅0.5 x 3 |

Unit: mm
Tolerance: ±0.3mm

| Pin No. | Function* |
|---------|------------------|
| 1 | Input / output |
| 2 | Output2 / input2 |
| 3 | Output1 / input1 |
| 4 | Ground |

* Pin function may vary

| Dimension | |
|-----------|----------|
| A | ∅5.08 |
| B | ∅9.15 |
| C | 3.5 max. |
| D | 2.0 min. |
| E | ∅0.5 x 3 |

Unit: mm
Tolerance: ±0.3mm

| Pin No. | Function* |
|---------|-----------|
| 1 | Input |
| 2 | Output |
| 3 | Ground |

* Pin function may vary

| Dimension | |
|-----------|----------|
| A | ∅5.08 |
| B | ∅9.15 |
| C | 3.5 max. |
| D | 2.0 min. |
| E | ∅0.5 x 3 |

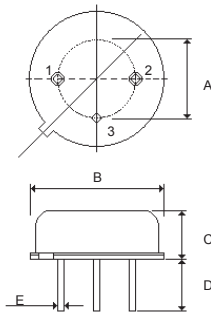
Unit: mm
Tolerance: ±0.3mm

| Pin No. | Function* |
|---------|----------------|
| 1 | Ground |
| 2 | Ground |
| 3 | Input / output |
| 4 | Output / input |
| 5 | Ground |

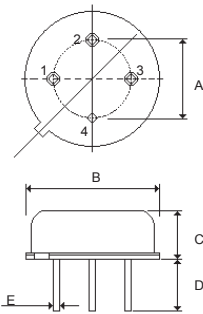
* Pin function may vary

| Dimension | |
|-----------|-----------|
| A | ∅7.62 |
| B | ∅15.3 |
| C | 4.5 max. |
| D | 3.5 min. |
| E | ∅0.65 x 5 |
| F | 2.54 |

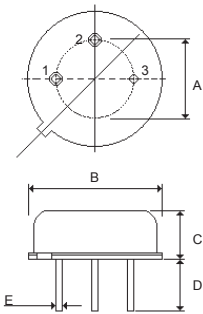
Unit: mm
Tolerance: ±0.3mm



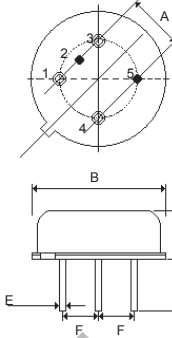
TO-39-2



TO-39-3



TO-39



TO-39-4

www.signal.com.tr



• Front-End SAW Filters for Automotive Electronics & Remote Controls

| Part Number | Center Frequency (MHz) | Insertion Loss (dB max.) | 3dB Bandwidth (MHz) | Package |
|---------------------|------------------------|--------------------------|---------------------|---------------|
| SF295M00A0000T9A1B0 | 295.0 | 3.0 | 0.6 | TO-39 |
| SF303M82A0000T9A1B0 | 303.825 | 3.0 | 0.6 | TO-39 |
| SF303M82A0000S5A1E0 | 303.825 | 3.0 | 0.6 | 5.0x5.0mm |
| SF303M87A0000T9A1B0 | 303.875 | 3.0 | 0.6 | TO-39 |
| SF303M87A0000S5A1E0 | 303.875 | 3.0 | 0.6 | 5.0x5.0mm |
| SF310M00A0000S5A1E0 | 310.0 | 3.0 | 0.8 | 5.0x5.0mm |
| SF315M00A0000T9A1B0 | 315.0 | 3.0 | 0.6 | TO-39 |
| SF315M00A0000T1A1B0 | 315.0 | 3.0 | 0.6 | F-11 |
| SF315M00A0000S5A1E0 | 315.0 | 3.0 | 0.6 | 5.0x5.0mm |
| SF315M50A0000T9A1B0 | 315.5 | 3.0 | 0.6 | TO-39 |
| SF318M00A0000T9A1B0 | 318.0 | 3.0 | 0.6 | TO-39 |
| SF319M50A0000T9A1B0 | 319.5 | 2.5 | 0.7 | TO-39 |
| SF345M00A0000S8A1B0 | 345.0 | 2.5 | 4.5 | 3.8x3.8mm (8) |
| SF345M00A0000S5A1E0 | 345.0 | 3.0 | 0.9 | 5.0x5.0mm |
| SF372M50A0000T9A1B0 | 372.5 | 3.0 | 0.6 | TO-39 |
| SF390M00A0000S5A1E0 | 390.0 | 3.0 | 1.0 | 5.0x5.0mm |
| SF395M00A0000S5A1E0 | 395.0 | 3.0 | 1.0 | 5.0x5.0mm |
| SF401M65A0000S5A1E0 | 401.65 | 3.0 | 0.6 | 5.0x5.0mm |
| SF401M90A0000T9A1B0 | 401.9 | 3.0 | 0.6 | TO-39 |
| SF418M00A0000T9A1B0 | 418.0 | 3.0 | 0.6 | TO-39 |
| SF418M00A0000S5A1E0 | 418.0 | 3.0 | 0.6 | 5.0x5.0mm |
| SF419M20A0000S5A1E0 | 419.2 | 3.0 | 1.2 | 5.0x5.0mm |
| SF430M50A0000T9A1B0 | 430.5 | 3.0 | 0.6 | TO-39 |
| SF430M50A0000T1A1B0 | 430.5 | 3.0 | 0.6 | F-11 |
| SF433M42A0000S5A1E0 | 433.42 | 3.5 | 0.6 | 5.0x5.0mm |
| SF433M42A0000S7A1B0 | 433.42 | 3.0 | 0.9 | 3.8x3.8mm (6) |
| SF433M92A0000T9A1B0 | 433.92 | 3.0 | 0.6 | TO-39 |
| SF433M92A0000T1A1B0 | 433.92 | 3.0 | 0.6 | F-11 |
| SF433M92A0000S5A1E0 | 433.92 | 3.0 | 0.6 | 5.0x5.0mm |
| SF433M92A0000T9A2B0 | 433.92 | 2.0 | 0.73 | TO-39 |
| SF433M92A0000S5A1E0 | 433.92 | 2.0 | 0.73 | 5.0x5.0mm |
| SF433M92A0000S5A2E0 | 433.92 | 2.5 | 0.6 | 5.0x5.0mm |
| SF433M92A0000S5A3E0 | 433.92 | 2.5 | 0.95 | 5.0x5.0mm |
| SF433M92A0000S5A4E0 | 433.92 | 2.2 | 0.7 | 5.0x5.0mm |
| SF433M92A0000S8A1B0 | 433.92 | 2.8 | 6.0 | 3.8x3.8mm (8) |
| SF433M92A0000S8A2B0 | 433.92 | 2.3 | 0.56 | 3.8x3.8mm (8) |
| SF434M42A0000S5A1E0 | 434.42 | 3.0 | 0.6 | 5.0x5.0mm |
| SF463M91A0000S5A1E0 | 463.912 | 2.5 | 1.2 | 5.0x5.0mm |
| SF499M25A0000T9A1B0 | 499.25 | 3.0 | 0.54 | TO-39 |
| SF859M15A0000T1A1B0 | 859.15 | 4.0 | 1.0 | F-11 |
| SF868M00A0000S5A1E0 | 868.0 | 3.5 | 1.2 | 5.0x5.0mm |
| SF868M30A0000S5A1E0 | 868.3 | 4.0 | 1.2 | 5.0x5.0mm |
| SF868M35A0000T1A1B0 | 868.35 | 4.0 | 1.2 | F-11 |
| SF868M35A0000S5A1E0 | 868.35 | 4.0 | 1.2 | 5.0x5.0mm |
| SF868M35A0000S8A1B0 | 868.35 | 3.5 | 1.8 | 3.8x3.8mm (8) |
| SF902M30A0000S5A1E0 | 902.3 | 3.5 | 1.2 | 5.0x5.0mm |
| SF914M50A0000T1A1B0 | 914.5 | 3.8 | 1.2 | F-11 |
| SF915M00A0000T9A1B0 | 915.0 | 3.5 | 1.2 | TO-39 |
| SF915M00A0000S5A1E0 | 915.0 | 4.0 | 1.2 | 5.0x5.0mm |
| SF916M50A0000T9A1B0 | 916.5 | 4.0 | 1.2 | TO-39 |
| SF916M50A0000T1A1B0 | 916.5 | 3.5 | 1.2 | F-11 |
| SF916M50A0000S5A1E0 | 916.5 | 4.0 | 1.2 | 5.0x5.0mm |

- Other frequencies and specifications are also available upon request, please consult with our sales representatives.



• Bandpass Filters for Dual Conversion Turners

| Part Number | Center Frequency (MHz) | Bandwidth (MHz) | Insertion Loss (dB max.) | Package |
|----------------------|------------------------|-----------------|--------------------------|---------------|
| SF1090M00A0000S8A1E0 | 1090.0 | 12.0 | 4.0 | 3.8x3.8mm (8) |
| SF1120M00A0000S8A1E0 | 1120.0 | 32.0 | 3.5 | 3.8x3.8mm (8) |
| SF1120M00A0000S3A2E0 | 1120.0 | 32.0 | 3.5 | 3.0x3.0mm |
| SF1216M00A0000S3A1E0 | 1216.0 | 8.0 | 3.2 | 3.0x3.0mm |
| SF1220M00A0000S8A1E0 | 1220.0 | 8.0 | 4.7 | 3.8x3.8mm (8) |

- Other frequencies and specifications are also available upon request, please consult with our sales representatives.

• IF Filters for Wireless LAN

| Part Number | Center Frequency (MHz) | 3dB Bandwidth (MHz) | Insertion Loss (dB max.) | Package |
|---------------------|------------------------|---------------------|--------------------------|---------------|
| SF280M00A0000S5A1E0 | 280.0 | 20.0 | 11.0 | 5.0x5.0mm |
| SF374M00A0000T9A1B0 | 374.0 | 22.0 | 9.0 | TO-39 |
| SF374M00A0000T9A2B0 | 374.0 | 22.0 | 8.5 | TO-39 |
| SF374M00A0000S5A1E0 | 374.0 | 22.0 | 9.0 | 5.0x5.0mm |
| SF374M00A0000S5A2E0 | 374.0 | 22.0 | 8.5 | 5.0x5.0mm |
| SF374M00A0000S5A3E0 | 374.0 | 19.0 | 9.0 | 5.0x5.0mm |
| SF374M00A0000S5A4E0 | 374.0 | 20.5 | 9.0 | 5.0x5.0mm |
| SF374M00A0000S8A1E0 | 374.0 | 23.0 | 9.0 | 3.8x3.8mm (8) |

- Other frequencies and specifications are also available upon request, please consult with our sales representatives.

• RF Filters for GPS

| Part Number | Center Frequency (MHz) | Bandwidth (MHz) | Insertion Loss (dB max.) | Package |
|----------------------|------------------------|-----------------|--------------------------|-----------|
| SF1542M50A0000S3A1E0 | 1542.50 | 34.0 | 3.3 | 3.0x3.0mm |
| SF1575M42A0000S3A1E0 | 1575.42 | 2.4 | 1.6 | 3.0x3.0mm |

- Other frequencies and specifications are also available upon request, please consult with our sales representatives.

• RF Filters for Cellular Phone

| Part Number | System | Center Frequency (MHz) | Bandwidth (MHz) | Insertion Loss (dB max.) | Package |
|----------------------|----------------|------------------------|-----------------|--------------------------|---------------|
| SF836M50A0000S3A1E0 | AMPS / CDMA Tx | 836.5 | 25.0 | 2.7 | 3.0x3.0mm |
| SF881M50A0000S3A1E0 | AMPS / CDMA Rx | 881.5 | 25.0 | 2.7 | 3.0x3.0mm |
| SF902M50A0000S3A1E0 | GSM Tx | 902.5 | 25.0 | 2.7 | 3.0x3.0mm |
| SF947M50A0000S3A1E0 | GSM Rx | 947.5 | 25.0 | 2.7 | 3.0x3.0mm |
| SF947M50A0000S7A1E0 | GSM Rx | 947.5 | 25.0 | 3.0 | 3.8x3.8mm (6) |
| SF897M50A0000S7A1E0 | EGSM Tx | 897.5 | 26.0 | 3.0 | 3.8x3.8mm (6) |
| SF900M00A0000S7A1E0 | EGSM Tx | 900.0 | 35.0 | 2.7 | 3.8x3.8mm (6) |
| SF945M00A0000S7A1E0 | EGSM Rx | 945.0 | 35.0 | 2.7 | 3.8x3.8mm (6) |
| SF1842M50A0000S3A1E0 | PCN / DCS Rx | 1842.5 | 75.0 | 3.5 | 3.0x3.0mm |
| SF1855M00A0000S3A1E0 | K-PCS Rx | 1855.0 | 30.0 | 3.0 | 3.0x3.0mm |

- Other frequencies and specifications are also available upon request, please consult with our sales representatives.

• IF Filters For Base Station

| Part Number | System | Center Frequency (MHz) | 3dB Bandwidth (MHz) | Insertion Loss (dB max.) | Package |
|---------------------|--------|------------------------|---------------------|--------------------------|---------------|
| SF70M00A0000D3A1B0 | CDMA | 70.0 | 6.0 | 21.8 | D3 (DIP3512)* |
| SF70M00A0000D3A2B0 | CDMA | 70.0 | 19.2 | 34.3 | D3 (DIP3512)* |
| SF233M15A0000F1A1B0 | PHS | 233.15 | 0.52 | 14.2 | F1 (F-16)* |

- Other frequencies and specifications are also available upon request, please consult with our sales representatives.

* For package information, please contact our sales representative for more information

• IF Filters for Wireless Local Loop / Broadband Access

| Part Number | System | Center Frequency (MHz) | 3dB Bandwidth (MHz) | Insertion Loss (dB max.) | Package |
|---------------------|--------|------------------------|---------------------|--------------------------|---------|
| SF110M59A0000R7A1B0 | DECT | 110.592 | ±0.576 min. | 3.5 | SR-75* |
| SF112M32A0000D1A1B0 | DECT | 112.32 | 1.05 | 13.5 | DOC14C* |
| SF204M00A0000R7A1B0 | SCDMA | 204.0 | 1.15 | 9.0 | SR-75* |

- Other frequencies and specifications are also available upon request, please consult with our sales representatives.

* For package information, please contact our sales representative for more information



● RF Filters for Pager Application

| Part Number | Center Frequency (MHz) | 3dB Bandwidth (MHz) | Insertion Loss (dB max.) | Package |
|---------------------|------------------------|---------------------|--------------------------|-----------|
| SF139M00A0000T1A1B0 | 139.0 | ±4.0 | 6.5 max. | F-11 |
| SF147M00A0000T1A1B0 | 147.0 | ±4.0 | 6.5 max. | F-11 |
| SF147M00A0000S5A1E0 | 147.0 | ±4.0 | 6.5 max. | 5.0x5.0mm |
| SF155M00A0000T1A1B0 | 155.0 | ±4.0 | 6.5 max. | F-11 |
| SF155M00A0000S5A1E0 | 155.0 | ±4.0 | 6.5 max. | 5.0x5.0mm |
| SF163M00A0000T1A1B0 | 163.0 | ±4.0 | 6.5 max. | F-11 |
| SF163M00A0000S5A1E0 | 163.0 | ±4.0 | 6.5 max. | 5.0x5.0mm |
| SF171M00A0000T1A1B0 | 171.0 | ±4.0 | 6.5 max. | F-11 |
| SF281M00A0000T1A1B0 | 281.0 | ±3.0 | 4.5 max. | F-11 |
| SF281M00A0000S5A1E0 | 281.0 | ±4.0 | 4.5 max. | 5.0x5.0mm |
| SF930M50A0000T1A1B0 | 930.5 | ±2.0 | 4.5 max. | F-11 |

- Other frequencies and specifications are also available upon request, please consult with our sales representatives.

● SAW Filters for Satellite Receiver

| Part Number | Center Frequency (MHz) | Insertion Loss (dB max.) | 3dB Bandwidth (MHz) | Package | Application(s) |
|---------------------|------------------------|--------------------------|---------------------|-----------|---------------------------------|
| SF480M00A0000T8A1B0 | 480.0 | 21.0 | 18.0 | TO-39-2 | One-Channel Satellite Receivers |
| SF480M00A0000S5A1E0 | 480.0 | 21.0 | 18.0 | 5.0x5.0mm | |
| SF480M00A0000T8A2B0 | 480.0 | 22.5 | 27.0 | TO-39-2 | |
| SF480M00A0000S5A2E0 | 480.0 | 22.5 | 27.0 | 5.0x5.0mm | |
| SF480M00A0000T8A3B0 | 480.0 | 20.0 | 27.0 | TO-39-2 | |
| SF480M00A0000T8A4B0 | 480.0 | 21.0 | 36.0 | TO-39-2 | |
| SF480M00A0000T9A1B0 | 480.0 | 15.0 | 16.0 | TO-39 | |
| SF480M00A0000T8A5B0 | 480.0 | 4.0 | 22.0 | TO-39-2 | |
| SF480M00A0000T7A1B0 | 480.0 | 24.0 | 54.0 | TO-39-3 | |
| SF479M50A0000T8A1B0 | 479.5 | 21.5 | 8.0 | TO-39-2 | |
| SF479M50A0000S5A1E0 | 479.5 | 21.5 | 8.0 | 5.0x5.0mm | |
| SF479M50A0000T8A2B0 | 479.5 | 18.0 | 6.5 | TO-39-2 | |
| SF479M50A0000T7A1B0 | 479.5 | 22.0 | 16.0 (5.5dB) | TO-39-3 | |
| SF479M50A0000T1A1B0 | 479.5 | 22.0 | 16.0 (5.5dB) | F-11 | |
| SF479M50A0000S5A2E0 | 479.5 | 22.0 | 16.0 (5.5dB) | 5.0x5.0mm | |
| SF479M50A0000T7A2B0 | 479.5 | 23.3 | 18 (5.5dB) | TO-39-3 | |
| SF479M50A0000T7A3B0 | 479.5 | 21.0 | 27.0 / 18.0 | TO-39-3 | |
| SF479M50A0000T7A4B0 | 479.5 | 22.0 | 15.0 / 27.0 | TO-39-3 | |
| SF479M50A0000T7A5B0 | 479.5 | 25.0 | 27.0 / 36.0 | TO-39-3 | |
| SF480M00A0000T7A1B0 | 480.0 | 23.5 | 8.0 / 54.0 | TO-39-3 | |
| SF402M78A0000T7A1E0 | 402.78 | 20.5 | 15.5 / 28.0 | TO-39-3 | |
| SF402M78A0000S5A1E0 | 402.78 | 20.5 | 15.5 / 28.0 | 5.0x5.0mm | |

- Other frequencies and specifications are also available upon request, please consult with our sales representatives.



• SAW Filters for CATV Channel (PAL Systems)

| Part Number | Center Frequency (MHz) | Image Carrier Frequency (MHz) | -1 dB Bandwidth (MHz) | Insertion Loss (dB) | Ripple (dB) | Rejection (dB) | Package | Marking on Package |
|---------------------|------------------------|-------------------------------|-----------------------|---------------------|-------------|----------------|---------|--------------------|
| SF52M25C001T6000B0 | 52.25 | 49.75 | 6.75 | 23.5 (typical) | ±0.6 | 42 min. | TO-39-4 | 1CH |
| SF60M50C002T6000B0 | 60.50 | 57.75 | | | | | | 2CH |
| SF68M50C003T6000B0 | 68.50 | 65.75 | | | | | | 3CH |
| SF80M00C004T6000B0 | 80.00 | 77.58 | | | | | | 4CH |
| SF88M00C005T6000B0 | 88.00 | 85.25 | | | | | | 5CH |
| SF171M00C006T6000B0 | 171.0 | 168.25 | 6.5 | 23.0 (typical) | ±0.6 | 38 min. | | 6CH |
| SF179M00C007T6000B0 | 179.0 | 176.25 | | | | | | 7CH |
| SF187M00C008T6000B0 | 187.0 | 184.25 | | | | | | 8CH |
| SF195M00C009T6000B0 | 195.0 | 192.25 | | | | | | 9CH |
| SF203M00C010T6000B0 | 203.0 | 200.25 | | | | | | 10CH |
| SF211M00C011T6000B0 | 211.0 | 208.25 | | | | | | 11CH |
| SF219M00C012T6000B0 | 219.0 | 216.25 | | | | | | 12CH |
| SF115M00C01ZT6000B0 | 115.0 | 112.25 | 6.5 | 24.0 (typical) | ±0.6 | 38 min. | CH1Z | |
| SF123M00C02ZT6000B0 | 123.0 | 120.25 | | | | | CH2Z | |
| SF131M00C03ZT6000B0 | 131.0 | 128.25 | | | | | CH3Z | |
| SF139M00C04ZT6000B0 | 139.0 | 136.25 | | | | | CH4Z | |
| SF147M00C05ZT6000B0 | 147.0 | 144.25 | | | | | CH5Z | |
| SF155M00C06ZT6000B0 | 155.0 | 152.25 | | | | | CH6Z | |
| SF163M00C07ZT6000B0 | 163.0 | 160.25 | | | | | CH7Z | |
| SF227M00C08ZT6000B0 | 227.0 | 224.25 | | | | | CH8Z | |
| SF610M00C25CT9000B0 | 610.0 | 607.15 | 6.5 | 6.5 (typical) | ±1.0 | 35 min. | TO-39 | CQF25C |

- Other frequencies and specifications are also available upon request, please consult with our sales representatives.

• SAW Duplexers for Cordless Phone

| Part Number | System | Lower Center Frequency (MHz) | Upper Center Frequency (MHz) | Insertion Loss (dB max.) | Package |
|---------------------|----------|------------------------------|------------------------------|--------------------------|---------------|
| SF26M40A0000W2D1B0 | CT1 | 26.40 | 41.40 | 6.0 / 4.0 | W2 * |
| SF45M24A0000W2D1B0 | CT1 | 45.24 | 48.24 | 4.5 / 4.5 | W2 * |
| SF46M79A0000W2D1B0 | CT1 | 46.79 | 49.83 | 3.5 / 3.5 | W2 * |
| SF903M00A0000S8D1E0 | ISM Band | 903.0 | 927.0 | 3.5 / 3.5 | 3.8x3.8mm (8) |
| SF903M45A0000S8D1E0 | ISM Band | 903.45 | 926.45 | 3.5 / 3.5 | 3.8x3.8mm (8) |
| SF903M75A0000T9D1B0 | ISM Band | 903.75 | 926.25 | 3.5 / 3.5 | TO-39 |
| SF903M75A0000S5D1E0 | ISM Band | 903.75 | 926.25 | 3.5 / 3.5 | 5.0x5.0mm |
| SF903M75A0000S8D1E0 | ISM Band | 903.75 | 926.25 | 3.5 / 3.5 | 3.8x3.8mm (8) |
| SF914M50A0000T9D1B0 | ISM Band | 914.5 | 959.5 | 3.5 / 3.5 | TO-39 |
| SF914M50A0000S5D1E0 | ISM Band | 914.5 | 959.5 | 3.5 / 3.5 | 5.0x5.0mm |
| SF914M50A0000S8D1E0 | ISM Band | 914.5 | 959.5 | 3.5 / 3.5 | 3.8x3.8mm (8) |

- Other frequencies and specifications are also available upon request, please consult with our sales representatives.

* For the package information of W2, please consults with our sales representatives



● SAW Filters for FRS & PMA

| Part Number | Center Frequency (MHz) | I/O Impedance (Ω) | Bandwidth (MHz) | Insertion Loss (dB max.) | Rejection (dB min.) | Package |
|---------------------|------------------------|----------------------------|---------------------|--------------------------|---------------------|---------------|
| SF295M00A0000T9A1B0 | 295.0 | 50.0 | ± 2.0 (Typical) | 4.5 | 50.0 | TO-39 |
| SF311M00A0000T1A1B0 | 311.0 | 150.0 | ± 2.0 (Typical) | 4.5 | 50.0 | F-11 |
| SF311M00A0000S5A1E0 | 311.0 | 150.0 | ± 2.0 (Typical) | 4.5 | 50.0 | 5.0x5.0mm |
| SF315M00A0000S5A1E0 | 315.0 | 50.0 | ± 2.0 (Typical) | 4.5 | 50.0 | 5.0x5.0mm |
| SF318M00A0000T9A1B0 | 318.0 | 50.0 | ± 2.0 (Typical) | 4.5 | 50.0 | TO-39 |
| SF350M00A0000T1A1B0 | 350.0 | 50.0 | ± 2.0 (Typical) | 4.5 | 50.0 | F-11 |
| SF350M00A0000S5A1E0 | 350.0 | 50.0 | ± 2.0 (Typical) | 4.5 | 50.0 | 5.0x5.0mm |
| SF380M00A0000S5A1E0 | 380.0 | 50.0 | ± 2.0 (Typical) | 4.5 | 50.0 | 5.0x5.0mm |
| SF395M00A0000S5A1E0 | 395.0 | 50.0 | ± 2.0 (Typical) | 4.5 | 50.0 | 5.0x5.0mm |
| SF400M00A0000T1A1B0 | 400.0 | 50.0 | ± 2.0 (Typical) | 4.5 | 50.0 | F-11 |
| SF403M00A0000T1A1B0 | 403.0 | 50.0 | ± 2.0 (Typical) | 4.5 | 50.0 | F-11 |
| SF406M00A0000T1A1B0 | 406.0 | 50.0 | ± 2.0 (Typical) | 4.5 | 50.0 | F-11 |
| SF410M00A0000T1A1B0 | 410.0 | 50.0 | ± 2.0 (Typical) | 4.5 | 50.0 | F-11 |
| SF410M00A0000T1A2B0 | 410.0 | 150.0 | ± 2.0 (Typical) | 4.5 | 50.0 | F-11 |
| SF410M00A0000T2A1B0 | 410.0 | 50.0 | ± 2.0 (Typical) | 4.5 | 50.0 | F-11 SMD |
| SF410M00A0000S5A1E0 | 410.0 | 50.0 | ± 2.0 (Typical) | 4.5 | 50.0 | 5.0x5.0mm |
| SF410M00A0000S7A1E0 | 410.0 | 50.0 | ± 2.0 (Typical) | 4.5 | 50.0 | 3.8x3.8mm (6) |
| SF418M00A0000T1A1B0 | 418.0 | 150.0 | ± 2.0 (Typical) | 4.5 | 50.0 | F-11 |
| SF425M00A0000S7A1E0 | 425.0 | 50.0 | ± 2.0 (Typical) | 4.5 | 50.0 | 3.8x3.8mm (6) |
| SF426M00A0000T1A1B0 | 426.0 | 50.0 | ± 2.0 (Typical) | 4.5 | 50.0 | F-11 |
| SF426M00A0000S5A1E0 | 426.0 | 50.0 | ± 2.0 (Typical) | 4.5 | 50.0 | 5.0x5.0mm |
| SF426M00A0000S7A1E0 | 426.0 | 50.0 | ± 2.0 (Typical) | 4.5 | 50.0 | 3.8x3.8mm (6) |
| SF429M00A0000S7A1E0 | 429.0 | 50.0 | ± 2.0 (Typical) | 4.5 | 50.0 | 3.8x3.8mm (6) |
| SF430M00A0000T1A1B0 | 430.0 | 50.0 | ± 2.0 (Typical) | 4.5 | 50.0 | F-11 |
| SF430M00A0000S7A1E0 | 430.0 | 50.0 | ± 2.0 (Typical) | 4.5 | 50.0 | 3.8x3.8mm (6) |
| SF434M00A0000S7A1E0 | 434.0 | 50.0 | ± 2.0 (Typical) | 4.5 | 50.0 | 3.8x3.8mm (6) |
| SF446M00A0000T1A1B0 | 446.0 | 50.0 | ± 2.0 (Typical) | 4.5 | 50.0 | F-11 |
| SF446M00A0000T1A2B0 | 446.0 | 150.0 | ± 2.0 (Typical) | 4.5 | 50.0 | F-11 |
| SF446M00A0000S5A1E0 | 446.0 | 50.0 | ± 2.0 (Typical) | 4.5 | 50.0 | 5.0x5.0mm |
| SF311M00A0000S5A2E0 | 446.0 | 150.0 | ± 2.0 (Typical) | 4.5 | 50.0 | 5.0x5.0mm |
| SF448M00A0000S7A1E0 | 448.0 | 50.0 | ± 2.0 (Typical) | 4.5 | 50.0 | 3.8x3.8mm (6) |
| SF450M00A0000T1A1B0 | 450.0 | 50.0 | ± 2.0 (Typical) | 4.5 | 50.0 | F-11 |
| SF450M00A0000S7A1E0 | 450.0 | 50.0 | ± 2.0 (Typical) | 4.5 | 50.0 | 3.8x3.8mm (6) |
| SF455M00A0000S7A1E0 | 455.0 | 50.0 | ± 2.0 (Typical) | 4.5 | 50.0 | 3.8x3.8mm (6) |
| SF458M00A0000T1A1B0 | 458.0 | 50.0 | ± 2.0 (Typical) | 4.5 | 50.0 | F-11 |
| SF460M00A0000S5A1E0 | 460.0 | 50.0 // 10nH | ± 2.0 (Typical) | 4.5 | 50.0 | 5.0x5.0mm |
| SF465M00A0000T1A1B0 | 465.0 | 50.0 | ± 2.0 (Typical) | 4.5 | 50.0 | F-11 |
| SF465M00A0000T1A2B0 | 465.0 | 150.0 | ± 2.0 (Typical) | 4.5 | 50.0 | F-11 |
| SF465M00A0000T2A1B0 | 465.0 | 50.0 | ± 2.0 (Typical) | 4.5 | 50.0 | F-11 SMD |
| SF465M00A0000T2A2B0 | 465.0 | 150.0 | ± 2.0 (Typical) | 4.5 | 50.0 | F-11 SMD |
| SF465M00A0000S5A1B0 | 465.0 | 50.0 | ± 2.0 (Typical) | 4.5 | 50.0 | 5.0x5.0mm |
| SF465M00A0000S7A1E0 | 465.0 | 50.0 | ± 2.0 (Typical) | 4.5 | 50.0 | 3.8x3.8mm (6) |
| SF470M00A0000T1A1B0 | 470.0 | 50.0 | ± 2.0 (Typical) | 4.5 | 50.0 | F-11 |
| SF475M00A0000T1A1B0 | 475.0 | 50.0 | ± 2.0 (Typical) | 4.5 | 50.0 | F-11 |

* Other frequencies and specifications are also available upon request, please consult with our sales representatives.